

HLL LIFECARE LIMITED

(A GOVT. OF INDIA ENTERPRISE)
Corporate and Registered Office:

HLL Bhavan, Poojappura,
Thiruvananthapuram – 695012, Kerala, India
Phone +91 471 2354949 / 2350961/2350959

Mail: choprojects@lifecarehll.com

Web: www.lifecarehll.com

SUB: AMENDMENT NO: 1- TENDER FOR RENOVATION OF OUTPATIENT DEPARTMENT (CIVIL AND ELECTRICAL WORKS ON TURNKEY BASIS) FOR PRIMARY HEALTH CENTRES AT KARTHIKAPALLY TALUK, ALAPUZHA DISTRICT, KERALA STATE- REG

REF: IFB NO: HLL/CHO-PROJ/KL-OPD/CIV&ELE/P-III/2017-18/24, DT. 20.11.2017

Sl. No	Details of PHC	EMD Amount In Rs
1	Aratupuzha	Rs.15,000
2	Cheruthana	Rs.15,000

2. The bid documents will be available up to 15.00 Hrs. on the previous working day of the opening of the bids. The scheduled date for issue, receipt and opening of bids is amended as follows.

- a) Date of issue of tender document - 20.11.2017 onwards
- b) Last date and time for receipt of bids - 04.12.2017 up to 15.00 Hrs.
- c) Date and time of opening of bids - 04.12.2017, 15.30 Hrs.
- d) Address for communication, receipt and place of opening of bids:

3. Amended Schedule is enclosed as Annexure I- Amended

All other terms & conditions of the tender remains unchanged

SENIOR MANAGER (PROJECTS)

SECTION X - AMENDED

HLL LIFECARE LIMITED

(A Government of India Enterprise)
Projects Division Corporate Head Office, Poojappura.P.O,
Thiruvananthapuram – 695012, Kerala, India
Phn: 0471- 2354949, 2775588

**RENOVATION OF OPD AT PRIMARY HEALTH CENTRES AT KARTHIKAPALLY TALUK,
ALAPUZHA DISTRICT, KERALA STATE**

(CIVIL AND ELECTRICAL WORKS ON TURNKEY BASIS)

ABSTRACT PRICE BID

Site. No.	Details of Hospital	Amount Quoted (Rs)
XI A	Renovation Of OPD at Primary Health Centres at Arattupuzha	
XI B	Renovation Of OPD at Primary Health Centres at Cheruthana	
Total Rs (Including GST):		

Total words in Rupees: _____

* Bidder shall clearly mention whether the GST included or excluded with % in the price bid. If specific indication of GST is not mentioned, then their quoted rate will be treated as inclusive of GST.

Bidder has to quote as per the Make/Brand specified in the BOQ, proposed to use for the project, and has to marks the Make/Brand in the quote / price schedule.

SEAL OF THE TENDERER

Date:

**SIGNATURE
NAME AND ADDRESS OF TENDERER**

Annexure- 1

<u>SECTION XI A</u>					
<u>RENOVATION OF OPD AT PRIMARY HEALTH CENTRES AT KARTHIKAPPALLY TALUK,</u> <u>ALLAPUZHA DISTRICT, KERALA STATE</u>					
S.No	DESCRIPTION	QTY	UNIT	RATE	AMOUNT
ARRATUPUZHA – CIVIL					
EARTH WORK					
	<p>"Excavate foundation in all kinds of soil including soft rock except hard rock requiring blasting part return and fill in foundation and basement in layers not exceeding 15cm in depth including watering , breaking clods and consolidating, disposing and spreading surplus earth within the site upto 1.5m depth.(No extra shall be payable for working space)</p> <p>Tenderer to ensure proper dewatering and shoring methods to ensure all time dry condition. Any damages of sides of foundation or collapsing of soil from sides due to excessive water seepage or surface runoff or any other cause have to be replaced with quarry dust or Malaimann at no extra cost."</p>	10.00	M.CUBE		
	<p>Supplying and filling in foundation with AVILABLE EARTH in layers of 150mm including watering and consolidating all complete as directed by Architect/Client</p>	21.00	M.CUBE		
CEMENT CONCRETE					
	<p>Cement concrete 1:5:10 (1 cement ,5 sand , 10 hard blue granite stone metal 40mm and down gauge) laid in layers not exceeding 15cm each in depth and well consolidated in foundation/levelling course including necessary shuttering , in steps, in floors, etc . all complete as directed.</p>		M.CUBE		
	<p>Cement concrete 1:4:8 (1 cement ,4 sand , 8 hard blue granite stone metal 40mm and down gauge in layers not exceeding 15 cms in depth well consolidated in foundation and levelling course under floors including necessary shuttering, in steps etc all complete as directed.</p>	2.00	M.CUBE		

<u>SECTION XI A</u>					
<u>RENOVATION OF OPD AT PRIMARY HEALTH CENTRES AT KARTHIKAPPALLY TALUK,</u>					
<u>ALLAPUZHA DISTRICT, KERALA STATE</u>					
S.No	DESCRIPTION	QTY	UNIT	RATE	AMOUNT
R.C.C.WORK					
	"RCC M20 (Design Mix) using hard blue granite metal 20mm and down gauge including centering, shuttering, curing etc., complete but excluding cost of reinforcement Note: Polythene sheet shall be provided under the slabs."				
	In lintels, bands and bed blocks at all levels.	1.00	M.CUBE		
	In Suspended roof slab of required thicknes				
	In Ground Floor		M.CUBE		
	"High Yield Strength Deformed bars in all RCC items & floorings General Note: Sizes of RCC elements shown in the drawing are only indicative and subject to change .No extra shall be payable on this account. Any change in size of concrete elements resulting in change of area of shuttering due to change in quantity of concrete shall also not be payable""		M.T		
MASONRY WORK					
	Brickwork of locally available best quality table moulded bricks of not less than 50kg/sq.cm crushing strength in cement mortar 1:5 (1 cement,5 sand) in foundation and plinth. No extra payment will be paid for any shape or size,turnings, fins, etc unless otherwise specified seperately.		M.CUBE		
	Random rubble masonry with hard stone in foundation and plinth including levelling up with cement concrete 1:6:12 (1 cement : 6 coarse sand : 12 graded stone aggregate 20 mm nominal size) upto plinth level with : Cement mortar 1:6 (1 cement : 6 coarse sand)		M.CUBE		

<u>SECTION XI A</u>					
<u>RENOVATION OF OPD AT PRIMARY HEALTH CENTRES AT KARTHIKAPPALLY TALUK,</u>					
<u>ALLAPUZHA DISTRICT, KERALA STATE</u>					
S.No	DESCRIPTION	QTY	UNIT	RATE	AMOUNT
	Half brickwork with locally available best quality table moulded bricks of not less than 50kg/sq.cm crushing strength in CM 1:3 (1 cement 3 sand) and reinforced with two numbers of 6mm dia. M.S rods at every fourth course embedded in cement mortar 1:4 for partitions.				
	In Ground Floor	6.00	M.SQ		
FLOORING					
	Providing & laying first class full body vitrified ceramic tile of make Kajaria/ Restile/Johnson or equivalent of size 600mmx600mmx 9.5mm or approved size of approved colour (matt finish) in flooring using spacer of required size (2mm-4mm) from endura or equivalent over a bed of cement mortar 1:4 of required thickness to match finished floor level mentioned and to match the neighbouring floor finish and jointed with epoxy grout of approved shade from Bal Endura or equivalent brand all complete as directed.(Basic cost of tile - Rs.85/sft).Any difference in basic price and OHP at the time of approval shall be adjusted for the laid area.No extra shall be payable for forming any pattern in the flooring like border, cut tiles,etc.	4.00	M.SQ		
	Providing and laying 600mm x 600mm or required size from Kajaria/ Restile/Johnson glazed tiles of plain series(Satin finish) in dado set in CM 1:3 with joints so as to form a true & even surface and joints finished neatly with white cement mixed with matching pigments all complete as directed. (Rate should include base plastering with CM 1:5 of required thickness.) The rate shall include cost of providing 6mmx6mm groove in the plastering at top of the tile all complete as directed.(Basic cost of tile - Rs.85/sft).Any difference in basic price and OHP at the time of approval shall be adjusted for the laid area.No extra shall be payable for forming any pattern like border, etc.	0.00	M.SQ		

<u>SECTION XI A</u>					
<u>RENOVATION OF OPD AT PRIMARY HEALTH CENTRES AT KARTHIKAPPALLY TALUK,</u>					
<u>ALLAPUZHA DISTRICT, KERALA STATE</u>					
S.No	DESCRIPTION	QTY	UNIT	RATE	AMOUNT
	Providing and laying 18mm thick machine cut and polished Marble slabs (Agaria White) of approved quality ,size and shade over a bed of minimum 20mm thick CM 1:4 on parapet tops, cill tops, planter boxes, door jams etc including polishing on all exposed sides and rounding off all edges, icluding providing grooves to required profile all complete as directed.(Basic cost of Granite - Rs.180/sft).Any difference in basic price and OHP at the time of approval shall be adjusted for the laid area.	0.00	M.SQ		
STEEL WORK					
	Providing and fixing stainless steel (Grade 304) railing made of Hollow tubes, channels, plates etc., including welding, grinding, buffing, polishing and making curvature (wherever required) and fitting the same with necessary stainless steel nuts and bolts complete, i/c fixing the railing with necessary accessories & stainless steel dash fasteners , stainless steel bolts etc., of required size, on the top of the floor or the side of waist slab with suitable arrangement as per approval of Engineer-in charge, (for payment purpose only weight of stainless steel members shall be considered excluding fixing accessories such as nuts, bolts,fasteners etc.).	10.00	KG		
	Structural steel work riveted, bolted or welded in built up sections, trusses and framed work, including cutting, hoisting, fixing in position and applying a priming coat of approved steel primer all complete.	328.00	KG		
	Providing and fixing in position collapsible steel shutters with vertical channels 20x10x2 mm and braced with flat iron diagonals 20x5 mm size, with top and bottom rail of T-iron 40x40x6 mm, with 40 mm dia steel pulleys, complete with bolts, nuts, locking arrangement, stoppers, handles, including applying a priming coat of approved steel primer.		M.SQ		

<u>SECTION XI A</u>					
<u>RENOVATION OF OPD AT PRIMARY HEALTH CENTRES AT KARTHIKAPPALLY TALUK,</u>					
<u>ALLAPUZHA DISTRICT, KERALA STATE</u>					
S.No	DESCRIPTION	QTY	UNIT	RATE	AMOUNT
ALUMINUM WORK					
	Providing, fabricating and fixing in position colour anodised aluminium sections of various profiles including louvers, subframes, etc in roof monitor or in other places made out of approved manufacturer section all complete as directed. The rate should also includes providing PU sealent in both inside and outside	0.08	M.T		
	Providing, fabricating and fixing in position colour anodised Aluminium framed louver with or without fixed glazing panels on side or top all as per Architect's drawings.Fabricated with Aluminium extruded Indal sections of weight specified in the drawing including providing and fixing clear float glass of required thickness and of approved manufacturer and fixed with U-tube glazing gasket snapon beadings,etc. including providing floor springs,locking arrangements etc all complete as per detailed architectural drawing.		M.SQ		
	Providing and fixing aluminium work for doors, windows, ventilators and partitions with extruded built up standard tubular sections/appropriate Z sections and other sections of approved make conforming to IS: 733 and IS: 1285, fixing with dash fasteners of required dia and size, including necessary filling up the gaps atjunctions, i.e. at top, bottom and sides with required EPDM rubber/ neoprene gasket etc. Aluminium sections shall be smooth, rust free, straight, mitred and jointed mechanically wherever required including cleat angle, Aluminium snap beading for glazing / paneling, C.P. brass / stainless steel screws, all complete as per architectural drawings and the directions of Engineer-in-charge : Powder coated aluminium (minimum thickness of powder coating 50 micron)	0.12	MT		
	S/F 100mm brass lock for aluminium door including necessary cutting and making good etc. complete	8.00	EACH		

<u>SECTION XI A</u>					
<u>RENOVATION OF OPD AT PRIMARY HEALTH CENTRES AT KARTHIKAPPALLY TALUK,</u>					
<u>ALLAPUZHA DISTRICT, KERALA STATE</u>					
S.No	DESCRIPTION	QTY	UNIT	RATE	AMOUNT
	Providing and fixing aluminium tower bolts (100*10mm) ISI marked anodised (anodic coating not less than grade AC 10 as per IS : 1868) transparent or dyed to required colour or shade with necessary screws etc. complete :	8.00	EACH		
	Providing and fixing glazing in aluminum door, window, ventilator shutters and partitions etc. with EPDM rubber / neoprene gasket etc. complete as per the architectural drawings and the directions of Engineer-in- Charge. (Cost of aluminum snap beading shall be paid in basic item): With float glass panes of 5.5 mm thickness.	34.00	SQM		
	Providing and fixing anodised aluminium grill (anodised transparent or dyed to required shade according to IS: 1868 with minimum anodic coating of grade AC 15) of approved design/pattern, with approved standard section and fixed to the existing window frame with C.P. brass/ stainless steel screws @ 200 mm centre to centre, including cutting the grill to proper opening size for fixing and operation of handles and fixing approved anodised aluminium standard section around the opening, all complete as per requirement and direction of Engineer-in-charge. (Only weight of grill to be measured for payment).		M.T		
	Providing and fixing aluminum tubular handle bar 32 mm outer dia, 3.0 mm thick & 2100 mm long with SS screws etc. complete as per direction of Engineerin-Charge. Anodized (AC 15) aluminum tubular handle bar	8.00	EACH		
	Providing and fixing aluminium hanging floor door stopper ISI marked anodised (anodic coating not less than grade AC 10 as per IS : 1868) transparent or dyed to required colour and shade with necessary screws etc. complete. With twin rubber stopper	8.00	EACH		

<u>SECTION XI A</u>					
<u>RENOVATION OF OPD AT PRIMARY HEALTH CENTRES AT KARTHIKAPPALLY TALUK,</u>					
<u>ALLAPUZHA DISTRICT, KERALA STATE</u>					
S.No	DESCRIPTION	QTY	UNIT	RATE	AMOUNT
	Providing and fixing double action hydraulic floor spring of approved brand and manufacture IS : 6315 marked, for doors including cost of cutting floors as required, embedding in floors and cover plates with brass pivot and single piece M.S. sheet outer box with slide plate etc. complete as per the direction of Engineer-in-charge. With Brass cover Plate		EACH		
	Providing and fixing 12 mm thick pre laminated particle board flat pressed three layer or graded wood particle board conforming to IS: 12823 Grade I Type II, in paneling fixed in aluminum doors, windows shutters and partition frames with C.P. brass / stainless steel screws etc. complete as per architectural drawings and directions of Engineer-inCharge. Pre-laminated particle board with decorative lamination on both sides	38.00	SQM		
	24 mm thick factory made PVC door shutters made of styles and rails of a uPVC hollow section of size 59x24 mm and wall thickness 2 mm (\pm 0.2 mm) with inbuilt edging on both sides. The styles and rails mitred and joint at the corners by means of M.S. galvanised/ plastic brackets of size 75x220 mm having wall thickness 1.0 mm and stainless steel screws. The styles of the shutter reinforced by inserting galvanised M.S. tube of size 20x20 mm and 1 mm (\pm 0.1 mm) wall thickness. The lock rail made up of 'H' section, a uPVC hollow section of size 100x24 mm and 2 mm (\pm 0.2 mm) wall thickness, fixed to the shutter styles by means of plastic/galvanised M.S. 'U' cleats. The shutter frame filled with a uPVC multi-chambered single panel of size not less than 620 mm, having over all thickness of 20 mm and 1 mm (\pm 0.1 mm) wall thickness. The panels filled vertically and tie bar at two places by inserting horizontally 6 mm galvanised M.S. rod and fastened with nuts and washers, complete as per manufacturer's specification and direction of Engineer-in-charge. (For W.C. and bathroom door shutter).		SQM		

<u>SECTION XI A</u>					
<u>RENOVATION OF OPD AT PRIMARY HEALTH CENTRES AT KARTHIKAPPALLY TALUK,</u>					
<u>ALLAPUZHA DISTRICT, KERALA STATE</u>					
S.No	DESCRIPTION	QTY	UNIT	RATE	AMOUNT
	Providing and fixing cup board shutters 25 mm thick, with Pre-laminated flat pressed three layer particle board or graded wood particle board IS: 12823 marked, exterior grade (Grade I Type II), having one side decorative lamination and other side balancing lamination, including IInd class teak wood lipping of 25 mm wide x12 mm thick with necessary screws and bright finished stainless steel piano hinges, complete as per direction of the Engineer-in-Charge		SQM		
ROOFING					
	""""Supplying and embedding P.V.C rain water pipes of approved quality embedded inside the RC columns/masonry in position with all necessary specials like shoes , bends or any other specials required to suit site conditions etc., jointed with wavin cement and lubricants with necessary MS clamps,brackets ,bolts and nuts all complete as directed. 110mm dia-6kg/sq.cm"		R.M		
	Providing and fixing 15 cm wide, 45 cm overall semi-circular plain G.S. sheet gutter with iron brackets 40x3mm size, bolts, nuts and washers etc., including making necessary connections with rain water pipes complete. 0.63 mm thick with zinc coating not less than 275 gm/m ²		R.M		
	Supply and Laying in cladding & Roofing COLOUR COATED sheet with guard flim made out of 0.5mm TCT 550MPa cold rolled sheet with hot dip metallic coating of Aluminium Zinc alloy 150gms/sq.m.The colour shall have a total coating thickness of 35 microns of an super Polyester colorbond XRW quality paint system or equivalent as per AS/NZS-2728:1997 (category 3), comprising of 20 microns exterior coat on top surface and 5 micron reverse coat on back surface over 5 micron primer coat on both surfaces and having 975/1000mm cover width with 26mm high crest at 195/200mm c/c in	36.00	SQM		

<u>SECTION XI A</u>					
<u>RENOVATION OF OPD AT PRIMARY HEALTH CENTRES AT KARTHIKAPPALLY TALUK,</u>					
<u>ALLAPUZHA DISTRICT, KERALA STATE</u>					
S.No	DESCRIPTION	QTY	UNIT	RATE	AMOUNT
	lengths as approved by Architect also to suit to site requirements and fixed with necessary suitable imported galvanized carbon steel self drilling and self tapping screws of BUILDEX or corroshield confirming to ASTM 3566-1990 (class- III) of required diameter and length as approved all complete with EPDM sealing washers, foam fillers wherever necessary, silicon sealant wherever necessary. The RAL Colour shall be 9006. No extra payable due to shade selection.				
	Same as item above but with polycarbonate sheet of 2mm thick (embossed) in cladding to suit the profile of the roof sheeting.(Only laid area without overlapping will be measured for payment.) all as per architectural drawings.		SQM		
PLASTERING					
	Prepare surfaces and plaster with CM 1:3(1 cement, 3 sand) ,12mm minimum thick (sponge finish) to ceiling sides and soffit of beams and columns and other interior and exterior RCC surfaces not contiguous to masonry.	12.00	M.SQ		
	Prepare surfaces and plaster with CM 1:5(1 cement, 5 sand) ,12mm minimum thick to all interior faces of walls (sponge finish) including RCC surfaces not contiguous to masonry.Necessary internal grooves of size 10mmx10mm shall be carried out as shown/directed by engineer-in-charge.		M.SQ		
PAINTING					
	Prepare surfaces and paint two coats of plastic emulsion paint of approved colour over two coats of Gypsum punning of 6 mm minimum thick and primer all complete as per manufacturers specifications to all ceilings in all floors.		M.SQ		
	Distempering with oil bound washable distemper of approved brand and manufacture to give an even shade : Old work (one or more coats)	2678.00	M.SQ		

<u>SECTION XI A</u>					
<u>RENOVATION OF OPD AT PRIMARY HEALTH CENTRES AT KARTHIKAPPALLY TALUK,</u>					
<u>ALLAPUZHA DISTRICT, KERALA STATE</u>					
S.No	DESCRIPTION	QTY	UNIT	RATE	AMOUNT
	Painting wood work with Deluxe Multi Surface Paint of required shade. Two or more coat applied @ 0.90 ltr/10 sqm over an under coat of primer applied @0.75 ltr/10 sqm of approved brand and manufacture		M.SQ		
	Prepare surfaces and paint with 3 coats (each coat of 25 micron) of synthetic enamel paint of approved make and shade over a coat of approved anticorrosive yellow primer (25 micron) on structural steel work, Cold rolled section,gutter at all heights.The finished surface should show uniform and uneven coverage of paint shall not be acceptable.	2.00	MT		
	Providing and applying plaster of paris putty of 2 mm thickness over plastered surface to prepare the surface even and smooth complete.	36.00	M.SQ		
	Removing white or colour wash by scrapping and sand papering and preparing the surface smooth including necessary repairs to scratches etc. complete	3696.00	M.SQ		
	Finishing walls with Acrylic Smooth exterior paint of required shade: Old work (Two or more coat applied @ 1.67 ltr/ 10 sqm) on existing cement paint surface	1018.00	M.SQ		
DISMANTLING					
	Dismantling plastered brickwalls in cement mortar including cleaning, stacking the useful materials as directed by engineer-in-charge and dumping the dismantled debris as indicated at site, levelling, consolidating, all complete as directed and disposing the debris away from site all complete as directed.	1.00	M.CUBE		

<u>SECTION XI A</u>					
<u>RENOVATION OF OPD AT PRIMARY HEALTH CENTRES AT KARTHIKAPPALLY TALUK,</u>					
<u>ALLAPUZHA DISTRICT, KERALA STATE</u>					
S.No	DESCRIPTION	QTY	UNIT	RATE	AMOUNT
	Dismantling the existing RCC concrete including cutting the reinforcement, stacking the useful materials as directed by engineer-in-charge, dumping the dismantled debris as indicated at site, leveling, consolidating, all complete as directed and disposal of debris away from site all complete.		M.CUBE		
	Dismantling Aluminium partition including disposing the debris away from site as directed by engineer in charge all complete.		SQM		
	Dismantling Tile Flooring and Walls & Roof and disposing the debris away from site all complete as directed.	1.00	M.SQ		
PATHWAY					
	Providing and laying cement concrete paver blocks of thick 60mm made out of M25 design mix of shape and profile as approved by architect .The rate should include cost of necessary excavation, RIVER SAND upto a depth of 50mm pointing in CM 1:3 all complete as directed.(For purpose of payment total laid area in length multiplied by width in plan will be paid.) Tenderer to submit necessary pamphlets along with tender.	36.00	M.SQ		
PLUMBING					
	Providing and fixing gun metal gate valve with C.I. wheel of approved quality -25MM	0	M.SQ		
	Providing and fixing C.P. brass angle valve for basin mixer and geyserpoints of approved quality conforming to IS:8931 a) 15 mm nominal bore: 15 mm nominal bore.Make:Hindware,Cera,,Jaquar etc..	0	EACH		

<u>SECTION XI A</u>					
<u>RENOVATION OF OPD AT PRIMARY HEALTH CENTRES AT KARTHIKAPPALLY TALUK,</u>					
<u>ALLAPUZHA DISTRICT, KERALA STATE</u>					
S.No	DESCRIPTION	QTY	UNIT	RATE	AMOUNT
	Providing and fixing PTMT Bottle Trap for Wash basin and sink. Bottle trap 38mm single piece moulded with height of 270mm, effective length of tail pipe 260mm from the centre of the waste coupling 77mm breadth with 25mm minimum water seal, weighing not less than 263gms.		EACH		
	Providing and fixing trap of self cleansing design with screwed down or hinged grating with or without vent arm complete, including cost of cutting and making good the walls and floors :100 mm inlet and 100 mm outlet	0	EACH		
	Constructing brick masonry manhole in cement mortar 1:4 (1 cement : 4 coarse sand) with R.C.C. top slab with 1:2:4 mix (1 cement : 2 coarse sand : 4 graded stone aggregate 20 mm nominal size), foundation concrete 1:4:8 mix (1 cement : 4 coarse sand : 8 graded stone aggregate 40 mm nominal size), inside plastering 12 mm thick with cement mortar 1:3 (1 cement : 3 coarse sand) finished with floating coat of neat cement and making channels in cement concrete 1:2:4 (1 cement : 2 coarse sand : 4 graded stone aggregate 20 mm nominal size) finished with a floating coat of neat cement complete as per standard design : With common burnt clay F.P.S designation 7.5		EACH		
	Providing and fixing square – mouth PVC. Gully trap grade “A” complete with CI grating brick masonry chamber with water tight tight CI cover with frame of 300 x 300mm size (inside) the weight of cover to be not less than 4.50 kg and frame to be not less than 2.70 kg as per standard design	0	EACH		
	Providing and fixing white vitreous china pedestal type water closet(European type W.C. pan) with seat and lid, 10 litre low level white P.V.C.flushing cistern, including flush pipe, with manually controlled device(handle lever), conforming to IS : 7231, with all fittings and fixtures complete, including cutting and making good the walls and floors wherever required :W.C. pan with ISI marked white solid plastic seat and lid	0	EACH		

<u>SECTION XI A</u>					
<u>RENOVATION OF OPD AT PRIMARY HEALTH CENTRES AT KARTHIKAPPALLY TALUK,</u>					
<u>ALLAPUZHA DISTRICT, KERALA STATE</u>					
S.No	DESCRIPTION	QTY	UNIT	RATE	AMOUNT
	Providing and fixing wash basin with C.I. brackets, 15 mm C.P. brass pillar taps, 32 mm C.P. brass waste of standard pattern, including painting of fittings and brackets, cutting and making good the walls wherever require: White Vitreous China Wash basin size 630x450 mm with a pair of 15 mm C.P. brass pillar taps	0	EACH		
	Supplying and providing Polyethylene Septic Tanks unique size and 3 chamber design with all accessories branded like United , for a capacity of 5000 litre (100 flush/day) including all material and labour charge for fittings		Ls		
	Providing and fixing Chlorinated Polyvinyl Chloride (CPVC) pipes, having thermal stability for hot & cold water supply including all CPVC plain & brass threaded fittings i/c fixing the pipe with clamps at 1.00 m spacing. This includes jointing of pipes & fittings with one step CPVC solvent cement and the cost of cutting chases and making good the same including testing of joints complete as per direction of Engineer in Charge. Concealed work including cutting chases and making good the walls etc				
	20 mm nominal outer dia .Pipes	0	RM		
	32 mm nominal outer dia Pipes	0	RM		
	50 mm nominal outer dia Pipes	0	RM		
	Providing and fixing Stainless Steel A ISI 304 (18/8) kitchen sink as per IS: 13983 with C.I. brackets and stainless steel plug 40 mm, including painting of fittings and brackets, cutting and making good the walls wherever required ::(Lowest retail price of sink not less than Rs. 3150)				
	Kitchen sink without drain board, Size -610x510 mm bowl depth 200 mm	0	EACH		
	Providing and fixing PVC Waste pipe for sink or wash basin including PVC waste fittings complete.:Semi rigid pipe 32mm dia	0	EACH		

<u>SECTION XI A</u>					
<u>RENOVATION OF OPD AT PRIMARY HEALTH CENTRES AT KARTHIKAPPALLY TALUK,</u>					
<u>ALLAPUZHA DISTRICT, KERALA STATE</u>					
S.No	DESCRIPTION	QTY	UNIT	RATE	AMOUNT
	Providing and fixing CP Waste coupling for wash basin and sink of approved quality, colour and make. Waste coupling 31mm of 79mm length and 62mm breadth, weighing not less than 45 gms. Make:Hindware,Jaquar etc.,	0	EACH		
	Extra for providing opening of required size & shape for wash basin/ kitchen sink in kitchen platform, vanity counter and similar location in marble/ Granite/stone work, including necessary holes for pillar taps etc. including moulding, rubbing and polishing of cut edges etc. complete.	0	EACH		
	Providing and fixing 600x450 mm beveled edge mirror of superior glass (of approved quality) complete with 6 mm thick hard board ground fixed to wooden cleats with C.P. brass screws and washers complete.	0	EACH		
	Providing and fixing PTMT towel rail complete with brackets fixed to wooden cleats with CP brass screws with concealed fitting arrangement of approved quality and colour. 600mm long towel rail with total length of 645mm, width 78mm and effective height of 88mm, weighing not less than 190gms.	0	EACH		
	Providing and fixing PTMT liquid soap container 109mm wide, 125mm high and 112mm distance from wall of standard shape with bracket of the same materials with snap fittings of approved quality and colour. weighing not less than 105 gms.	0	EACH		
	Providing & fixing of CP Health faucet. Hand operated spray unit (instand type)	0	Set		
	Providing and fixing PVC pipes for water supply arrangements including cost pipes, fittings, solvent cement,testing of pipes, labour charges etc complete : Concealed work including cutting chases and making good the wall etc				
	20mm dia. PVC pipe	0	RM		

<u>SECTION XI A</u>					
<u>RENOVATION OF OPD AT PRIMARY HEALTH CENTRES AT KARTHIKAPPALLY TALUK,</u>					
<u>ALLAPUZHA DISTRICT, KERALA STATE</u>					
S.No	DESCRIPTION	QTY	UNIT	RATE	AMOUNT
	25mm dia. PVC pipe	6	RM		
	32mm dia. PVC pipe	0	RM		
	Providing and fixing CP grating of 6mm thick with rim including setting in floor with white cement mortar and making good the floor				
	125mm dia	0	EACH		
	Providing and fixing PVC soil, waste and vent pipe to IS : 13592 of SWR quality including all fittings, like : Bends, Tees, Elbows, Collars, junction, inspection doors, cowls, offsets, access pipes, jointing with rubber ring / solvent cement by application of leak proof adhesive like FRP paste including cutting holes in walls and floors and making good. Make:Supreme,Finolex,Prince etc.,				
	50mm dia	0	RM		
	110mm dia	0	RM		
CURTAIN WORK					
	1.Two range of curtain cloth – Type 1 - II.				
	2. Both for doors, windows and partions.				
	3. Assorted colours plain & prints				
	4.Stitched as per site/ size requirement				
	5.Minor modifications in stitching as per site/ size requirement				
	6.Preferred colour (Brown, Cream, Beige)				
	7.Curtain price (including cloth & curtain rod) to be quoted in Squire metre				
	8.Stitching for each curtain to be absorb in the price of the cloth generally 2 meters.				
	9.Fast colours, water wash				
	10.Fabric density Non Transparent Composition				
	11.Fabric of curtain shall be soft texture, great shading, drape effect and nice doobby.				
	12.The bracket shall be side mounted and front mounted as required				
	13.First rod mount is 3.5 inches from the wall.				

<u>SECTION XI A</u>					
<u>RENOVATION OF OPD AT PRIMARY HEALTH CENTRES AT KARTHIKAPPALLY TALUK,</u>					
<u>ALLAPUZHA DISTRICT, KERALA STATE</u>					
S.No	DESCRIPTION	QTY	UNIT	RATE	AMOUNT
	14.Where curtain used as a partition/ long length, sufficient support from ceiling should be provided to avoid sagging.				
	15.Rate quoted for fully stitched Curtain with top nepha with punch holes after lining bucramreinforced with SS / PVC islets and lower nepha 200mm double turned.				
	Type -I (Surgical Curtain)				
	Curtain fabric weight shall be up to 275-300 (±5%) gsm Composition of fabric shall be polyester yarn I.E. 300 denier fast colour sink age shall be (±5%) Weft and warp shall be polyester / cotton polyester mix	0	M.SQ		
	Type - II (Window & Door Curtain)				
	Curtain fabric weight shall be up to 250-275 (±5%) gsm Composition of fabric shall be polyester yarn I.E. 300 denier fast colour sink age shall be (±5%) Weft and warp shall be polyester / cotton polyester mix	0	M.SQ		
FALSE CEILING					
5	Providing & Fixing of False ceiling shall be provided with Armstrong Lay in (Hot dipped galvanized steel) metal ceiling system 600 X 600 X 5 mm with standard perforation of 2.5 mm dia. (16% open space) and fleece with NRC of 70 & CAC 36 to be laid on Armstrong Grid system. Armstrong Orcal Lay in metal ceiling system consisting of 600 X 600 mm Lay in tiles of pre coated galvanized steel in 0.5 mm thickness in white colour with standard perforation of 2.5 mm dia. and open area of 16 %. The back of tiles should have black acoustical fleece with NRC of .70 & CAC 36 to be laid on Armstrong Grid system with 15 mm wide T section flanges Colour white having rotary stitching on the main Runner, 1200 mm & 600 mm cross Tees, fixed to the structural soffit by Butterfly clip hangers, suspension wires & anchor fasteners as per manufacturers specification. Suspension wires to be provided at every 600 mm c/c with two numbers ties on each anchor fastener, Perimeter trim of Trulok wall angle in white colour secured		M.SQ		

<u>SECTION XI A</u>					
<u>RENOVATION OF OPD AT PRIMARY HEALTH CENTRES AT KARTHIKAPPALLY TALUK,</u>					
<u>ALLAPUZHA DISTRICT, KERALA STATE</u>					
S.No	DESCRIPTION	QTY	UNIT	RATE	AMOUNT
	to wall at 450 mm maximum centers.				
	Providing and Laying kerb channel (Well ring) 120 cm wide and 75 mm thick of CC 1:3:6 over 150 mm thick compacted bed of CONCRETE of well rammed and consolidated and grouted with fine sand.		EACH		
SUB TOTAL (Civil)					
ELECTRICAL WORKS					
1	Point wiring in PVC conduit with modular type switch.				
	Wiring for light point/fan point/exhaust fan point /call bell point with 1.5 sq mm FR PVC insulated copper conductor single core cable in surface/recessed medium class PVC conduit, with modular switch, modular plate, suitable PVC box and earthing the point with 1.5 sq.mm FR PVC insulated copper conductor single core cable etc as required.				
	Group C	10	Point		
2	Wiring through PVC conduit				
	Wiring for circuit/submain wiring along with earth wire with the following sizes of FR PVC insulated copper conductor, single core cable in surface/recessed medium class PVC conduit as required.(Make:Havells/Finolex/V-guard/Polycab)				
a	2X1.5 sq.mm + 1X1.5 sq.mm earth wire	45	Metre		
b	2X2.5 sq.mm + 1 X2.5 sq mm earth wire	45	Metre		
c	2X4 sq.mm + 1X4 sq.mm earth wire	0	Metre		
2.1	Telephone wiring in existing conduit:				
	Supplying and drawing following pair 0.5 sq mm FR PVC insulated annealed copper conductor, unarmored telephone cable in the existing surface/ recessed steel/ PVC conduit as required.				
a	2 Pair	0	Metre		

<u>SECTION XI A</u>					
<u>RENOVATION OF OPD AT PRIMARY HEALTH CENTRES AT KARTHIKAPPALLY TALUK,</u>					
<u>ALLAPUZHA DISTRICT, KERALA STATE</u>					
S.No	DESCRIPTION	QTY	UNIT	RATE	AMOUNT
3	A/C point				
	S/F 20A SPN MCB industrial socket outlet: Supplying and fixing 20 amps, 240 volts, SPN industrial type, socket outlet, with 2 pole and earth, metal enclosed plug top alongwith 20 amps "C" curve, SP, MCB, in sheet steel enclosure, on surface or in recess, with chained metal cover for the socket out let and complete with connections, testing and commissioning etc. as required.(Make: Legrand/Havells/HPL)	0	Point		
4	Modular type blanking plate:				
	Supplying and fixing modular blanking plate on the existing modular plate & switch box excluding modular plate as required.(Make: Legrand/Havells/HPL)	3	Each		
5	Modular boxes, bases & cover plate:				
	Supplying and fixing following size/modules, GI box along with modular base & cover plate for modular switches in recess etc as required.(Make: Legrand/Havells/HPL)				
a	3 module	3	Each		
b	6 module	3	Each		
6	Modular type switch/socket:				
	Supplying and fixing following modular switch/socket on the existing modular plate & switch box including connections but excluding modular plate etc as required. (Make: Legrand/Havells/HPL)				
a	5/6 Amps switch	7	Each		
b	3 pin 5/6 Amp socket outlet	7	Each		
c	15/16 Amps switch	0	Each		
d	6pin 15/16 Amps (universal) socket outlet	0	Each		
e	Telephone socket outlet	0	Each		
7	S/F PVC conduit:				

<u>SECTION XI A</u>					
<u>RENOVATION OF OPD AT PRIMARY HEALTH CENTRES AT KARTHIKAPPALLY TALUK,</u>					
<u>ALLAPUZHA DISTRICT, KERALA STATE</u>					
S.No	DESCRIPTION	QTY	UNIT	RATE	AMOUNT
	Supplying and fixing of following sizes of medium class PVC conduit along with accessories in surface/recess including cutting the wall and making good the same in case of recessed conduit as required.(ISI Make)				
a	20 mm	45	Metre		
b	25 mm	0	Metre		
8	ITC Fluorescent fitting directly on surface: Installation, testing and commissioning of pre-wired, fluorescent fitting / compact fluorescent fitting/LED of all types, complete with all accessories and tube etc. directly on ceiling/ wall, including connection with 1.5 sq. mm FR PVC insulated, copper conductor, single core cable and earthing etc. as required.	7	Each		
9	ITC Ceiling fan: Installation, testing and commissioning of ceiling fan, including wiring the down rods of standard length (upto 30 cm) with 1.5 sq. mm FR PVC insulated, copper conductor, single core cable etc. as required.	3	Each		
10	Supplying and fixing two module stepped type electronic fan regulator on the existing modular plate switch box including connections but excluding modular plate etc. as required.	3	Each		
11	CABLE SUPPLY, LAYING AND TERMINATION				
	Wiring for circuit/ submain wiring along with earth wire with the following sizes of FR PVC insulated copper conductor, single core cable in surface/ recessed medium class PVC conduit as required.				
a	From Main to DB				
	2 X 4 sq. mm + 1 X 4 sq. mm earth wire	15	Metre		

<u>SECTION XI A</u>					
<u>RENOVATION OF OPD AT PRIMARY HEALTH CENTRES AT KARTHIKAPPALLY TALUK,</u>					
<u>ALLAPUZHA DISTRICT, KERALA STATE</u>					
S.No	DESCRIPTION	QTY	UNIT	RATE	AMOUNT
12	Supply of 10W LED fittings with decorative end cap, powder coated CRCA steel channel complete with all electrical accessories like electronic ballast, lamp holder, 10W lamp etc complete as required. (Havells LHEWEBP7IN1W010/	7	Each		
12.1	Supply and installation of 18 W CFL with its all accessories.	0	Each		
13	Supply and installation of 1200 mm sweep Ceiling fan, white colour, 5 star rated as per BEE complete with blades, down rod, shackle, canopy etc(Make Havells/bajaj/usha/V-guard/Crompton)	3	Each		
13.1	Supply and installation wall fan, white colour, 5 star rated as per BEE complete with its all accessories(Make Havells/bajaj/usha/V-guard)	0	Each		
14	S/F SP & N DB: Supplying and fixing following way prewired SP&N MCB, distribution board of steel sheet for 240 volts on surface/recess complete with loose wire box, terminal connectors for all incoming and outgoing circuits, duly prewired with suitable size FR PVC insulated copper conductor up to terminal blocks, tinned copper bus bar, neutral link, earth bar, detachable gland plate, interconnections, powder painted including earthing etc.as required(But without MCB/RCCB/Isolator) (Make: Legrand/Havells/HPL)				
	8 way SPN, double door	1	Each		
14.1	S/F of DP ISOLATOR Supplying and fixing following rating, double pole, (single phase and neutral), 240 volts, ISOLATOR having a sensitivity current upto 100 to 300 milliamperes in the existing MCB DB complete with connections, testing and commissioning etc, as required.(Make: Legrand/Havells/HPL)				
	40 A, DP isolator	1	Each		

SECTION XI A

**RENOVATION OF OPD AT PRIMARY HEALTH CENTRES AT KARTHIKAPPALLY TALUK,
ALLAPUZHA DISTRICT, KERALA STATE**

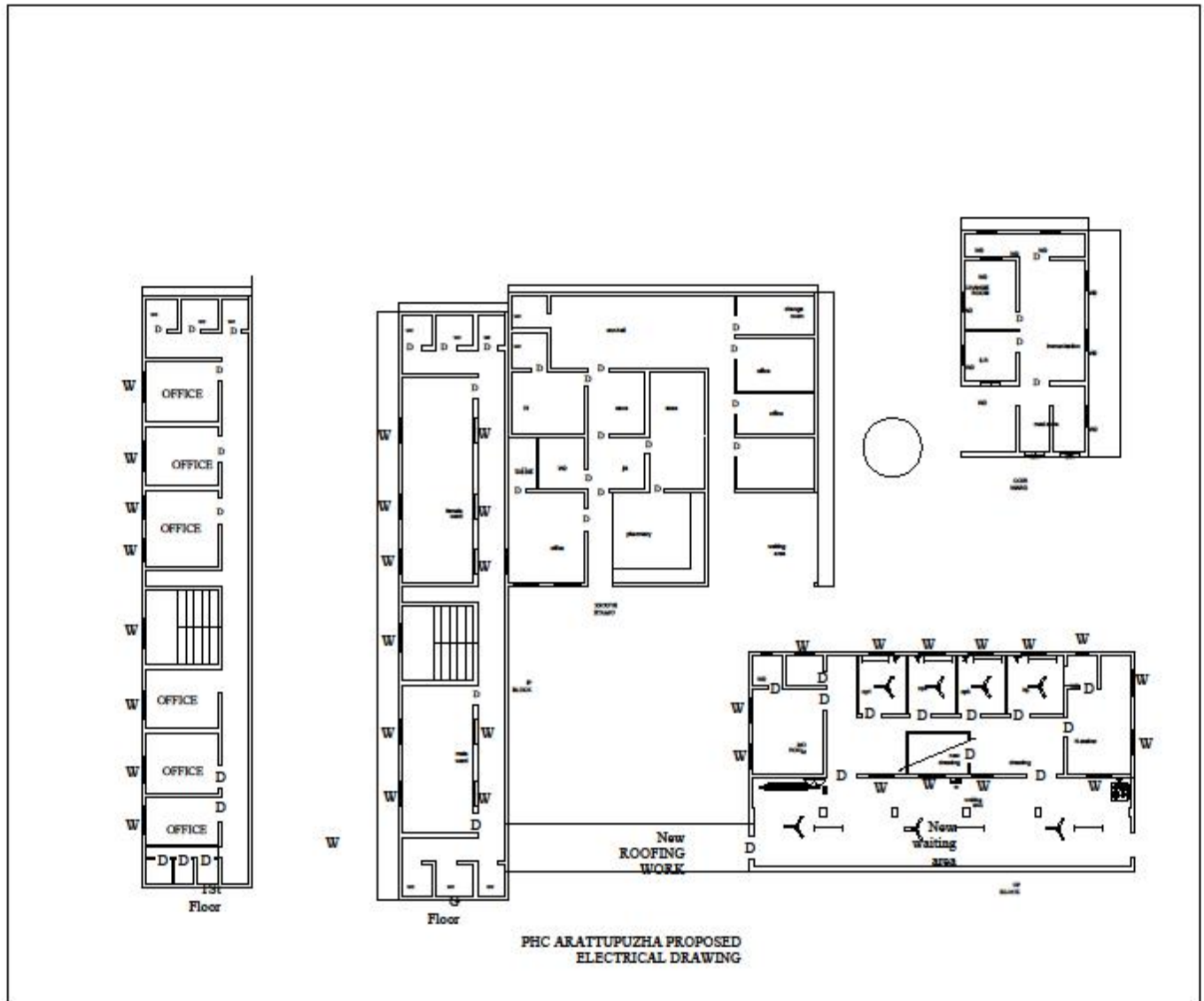
S.No	DESCRIPTION	QTY	UNIT	RATE	AMOUNT
14.2	S/F of SP MCB				
	Supplying and fixing 6 amps to 10 amps rating, 240 Volts, "C" series, miniature circuit breaker suitable for lighting and other loads of following poles in the existing MCB DB complete with connections, testing and commissioning etc as required.(Make: Legrand/Havells/HPL)				
	6/10A SP MCB	6	Each		
15	Miscellaneous Items				
15.1	Miscellaneous electrical work, removing of existing conduits and interconnections of light,6A socket/16A socket/A/C point from existing DB	0	LS		
15.2	Miscellaneous work for supply and fixing of 1-tube light & 1-3 star rated ceiling fan with its all accessories only as per the direction of engineer in charge.[ISI MAKE]	0	Ls		
	Sub Total (Electrical)				
	Grand Sub Total (Civil & Electrical) (Rs:)				
	GST				
	Grand Total				

I agree to complete the work as per the schedule at the rate quoted by me as above.

Date:

BIDDER

DRAWING – ELECTRICAL



<u>SECTION XI B</u>					
<u>RENOVATION OF OPD AT PRIMARY HEALTH CENTRES AT KARTHIKAPALLY TALUK,</u> <u>ALLAPUZHA DISTRICT, KERALA STATE</u>					
S.No	DESCRIPTION	QTY	UNIT	RATE	AMOUNT
CHERUTHANA – CIVIL					
EARTH WORK					
	"Excavate foundation in all kinds of soil including soft rock except hard rock requiring blasting part return and fill in foundation and basement in layers not exceeding 15cm in depth including watering , breaking clods and consolidating, disposing and spreading surplus earth within the site upto 1.5m depth.(No extra shall be payable for working space) Tenderer to ensure proper dewatering and shoring methods to ensure all time dry condition. Any damages of sides of foundation or collapsing of soil from sides due to excessive water seepage or surface runoff or any other cause have to be replaced with quarry dust or Malaimann at no extra cost."	6.00	M.CUBE		
	Supplying and filling in foundation with AVILABLE EARTH in layers of 150mm including watering and consolidating all complete as directed by Architect/Client	14.00	M.CUBE		
CEMENT CONCRETE					
	Cement concrete 1:5:10 (1 cement ,5 sand , 10 hard blue granite stone metal 40mm and down gauge) laid in layers not exceeding 15cm each in depth and well consolidated in foundation/levelling course including necessary shuttering , in steps, in floors, etc . all complete as directed.		M.CUBE		
	Cement concrete 1:4:8 (1 cement ,4 sand , 8 hard blue granite stone metal 40mm and down gauge in layers not exceeding 15 cms in depth well consolidated in foundation and levelling course under floors including necessary shuttering, in steps etc all complete as directed.	5.00	M.CUBE		

<u>SECTION XI B</u>					
<u>RENOVATION OF OPD AT PRIMARY HEALTH CENTRES AT KARTHIKAPALLY TALUK,</u>					
<u>ALLAPUZHA DISTRICT, KERALA STATE</u>					
S.No	DESCRIPTION	QTY	UNIT	RATE	AMOUNT
R.C.C.WORK					
	"RCC M20 (Design Mix) using hard blue granite metal 20mm and down gauge including centering, shuttering, curing etc., complete but excluding cost of reinforcement Note: Polythene sheet shall be provided under the slabs."				
	In lintels, bands and bed blocks at all levels.	1.50	M.CUBE		
	In Suspended roof slab of required thicknes				
	In Ground Floor		M.CUBE		
	"High Yield Strength Deformed bars in all RCC items & floorings General Note: Sizes of RCC elements shown in the drawing are only indicative and subject to change .No extra shall be payable on this account. Any change in size of concrete elements resulting in change of area of shuttering due to change in quantity of concrete shall also not be payable""	0.10	M.T		
MASONRY WORK					
	Brickwork of locally available best quality table moulded bricks of not less than 50kg/sq.cm crushing strength in cement mortar 1:5 (1 cement,5 sand) in foundation and plinth. No extra payment will be paid for any shape or size,turnings, fins, etc unless otherwise specified seperately.		M.CUBE		

<u>SECTION XI B</u>					
<u>RENOVATION OF OPD AT PRIMARY HEALTH CENTRES AT KARTHIKAPALLY TALUK,</u>					
<u>ALLAPUZHA DISTRICT, KERALA STATE</u>					
S.No	DESCRIPTION	QTY	UNIT	RATE	AMOUNT
	Random rubble masonry with hard stone in foundation and plinth including levelling up with cement concrete 1:6:12 (1 cement : 6 coarse sand : 12 graded stone aggregate 20 mm nominal size) upto plinth level with : Cement mortar 1:6 (1 cement : 6 coarse sand)		M.CUBE		
	Half brickwork with locally available best quality table moulded bricks of not less than 50kg/sq.cm crushing strength in CM 1:3 (1 cement 3 sand) and reinforced with two numbers of 6mm dia. M.S rods at every fourth course embedded in cement mortar 1:4 for partitions.				
	In Ground Floor	25.00	M.SQ		
FLOORING					
	Providing & laying first class full body vitrified ceramic tile of make Kajaria/ Restile/Johnson or equivalent of size 600mmx600mmx 9.5mm or approved size of approved colour (matt finish) in flooring using spacer of required size (2mm-4mm) from endura or equivalent over a bed of cement mortar 1:4 of required thickness to match finished floor level mentioned and to match the neighbouring floor finish and jointed with epoxy grout of approved shade from Bal Endura or equivalent brand all complete as directed.(Basic cost of tile - Rs.85/sft).Any difference in basic price and OHP at the time of approval shall be adjusted for the laid area.No extra shall be payable for forming any pattern in the flooring like border, cut tiles,etc.	49.00	M.SQ		

<u>SECTION XI B</u>					
<u>RENOVATION OF OPD AT PRIMARY HEALTH CENTRES AT KARTHIKAPALLY TALUK,</u>					
<u>ALLAPUZHA DISTRICT, KERALA STATE</u>					
S.No	DESCRIPTION	QTY	UNIT	RATE	AMOUNT
	<p>Providing and laying 600mm x 600mm or required size from Kajaria/ Restile/Johnson glazed tiles of plain series(Satin finish) in dado set in CM 1:3 with joints so as to form a true & even surface and joints finished neatly with white cement mixed with matching pigments all complete as directed. (Rate should include base plastering with CM 1:5 of required thickness.)</p> <p>The rate shall include cost of providing 6mmx6mm groove in the plastering at top of the tile all complete as directed.(Basic cost of tile - Rs.85/sft).Any difference in basic price and OHP at the time of approval shall be adjusted for the laid area.No extra shall be payable for forming any pattern like border, etc.</p>	0.00	M.SQ		
	<p>Providing and laying 18mm thick machine cut and polished Marble slabs (Agaria White) of approved quality ,size and shade over a bed of minimum 20mm thick CM 1:4 on parapet tops, cill tops, planter boxes, door jams etc including polishing on all exposed sides and rounding off all edges, including providing grooves to required profile all complete as directed.(Basic cost of Granite - Rs.180/sft).Any difference in basic price and OHP at the time of approval shall be adjusted for the laid area.</p>	0.00	M.SQ		
STEEL WORK					

<u>SECTION XI B</u>					
<u>RENOVATION OF OPD AT PRIMARY HEALTH CENTRES AT KARTHIKAPALLY TALUK,</u>					
<u>ALLAPUZHA DISTRICT, KERALA STATE</u>					
S.No	DESCRIPTION	QTY	UNIT	RATE	AMOUNT
	Providing and fixing stainless steel (Grade 304) railing made of Hollow tubes, channels, plates etc., including welding, grinding, buffing, polishing and making curvature (wherever required) and fitting the same with necessary stainless steel nuts and bolts complete, i/c fixing the railing with necessary accessories & stainless steel dash fasteners , stainless steel bolts etc., of required size, on the top of the floor or the side of waist slab with suitable arrangement as per approval of Engineer-in charge, (for payment purpose only weight of stainless steel members shall be considered excluding fixing accessories such as nuts, bolts,fasteners etc.).		KG		
	Structural steel work riveted, bolted or welded in built up sections, trusses and framed work, including cutting, hoisting, fixing in position and applying a priming coat of approved steel primer all complete.	1888.00	KG		
	Providing and fixing in position collapsible steel shutters with vertical channels 20x10x2 mm and braced with flat iron diagonals 20x5 mm size, with top and bottom rail of T-iron 40x40x6 mm, with 40 mm dia steel pulleys, complete with bolts, nuts, locking arrangement, stoppers, handles, including applying a priming coat of approved steel primer.		M.SQ		
ALUMINUM WORK					
	Providing, fabricating and fixing in position colour anodised aluminium sections of various profiles including louvers, subframes, etc in roof monitor or in other places made out of approved manufacturer section all complete as directed. The rate should also includes providing PU sealent in both inside and outside	0.03	M.T		

<u>SECTION XI B</u>					
<u>RENOVATION OF OPD AT PRIMARY HEALTH CENTRES AT KARTHIKAPALLY TALUK,</u>					
<u>ALLAPUZHA DISTRICT, KERALA STATE</u>					
S.No	DESCRIPTION	QTY	UNIT	RATE	AMOUNT
	Providing, fabricating and fixing in position colour anodised Aluminium framed louver with or without fixed glazing panels on side or top all as per Architect's drawings.Fabricated with Aluminium extruded Indal sections of weight specified in the drawing including providing and fixing clear float glass of required thickness and of approved manufacturer and fixed with U-tube glazing gasket snapon beadings,etc. including providing floor springs,locking arrangements etc all complete as per detailed architectural drawing.		M.SQ		
	Providing and fixing aluminium work for doors, windows, ventilators and partitions with extruded built up standard tubular sections/appropriate Z sections and other sections of approved make conforming to IS: 733 and IS: 1285, fixing with dash fasteners of required dia and size, including necessary filling up the gaps atjunctions, i.e. at top, bottom and sides with required EPDM rubber/ neoprene gasket etc. Aluminium sections shall be smooth, rust free, straight, mitred and jointed mechanically wherever required including cleat angle, Aluminium snap beading for glazing / paneling, C.P. brass / stainless steel screws, all complete as per architectural drawings and the directions of Engineer-in-charge : Powder coated aluminium (minimum thickness of powder coating 50 micron)	0.03	MT		
	S/F 100mm brass lock for aluminium door including necessary cutting and making good etc. complete	2.00	EACH		
	Providing and fixing aluminium tower bolts (100*10mm) ISI marked anodised (anodic coating not less than grade AC 10 as per IS : 1868) transparent or dyed to required colour or shade with necessary screws etc. complete :	2.00	EACH		

<u>SECTION XI B</u>					
<u>RENOVATION OF OPD AT PRIMARY HEALTH CENTRES AT KARTHIKAPALLY TALUK,</u>					
<u>ALLAPUZHA DISTRICT, KERALA STATE</u>					
S.No	DESCRIPTION	QTY	UNIT	RATE	AMOUNT
	Providing and fixing glazing in aluminum door, window, ventilator shutters and partitions etc. with EPDM rubber / neoprene gasket etc. complete as per the architectural drawings and the directions of Engineer-in- Charge. (Cost of aluminum snap beading shall be paid in basic item): With float glass panes of 5.5 mm thickness.	12.00	SQM		
	Providing and fixing anodised aluminium grill (anodised transparent or dyed to required shade according to IS: 1868 with minimum anodic coating of grade AC 15) of approved design/pattern, with approved standard section and fixed to the existing window frame with C.P. brass/ stainless steel screws @ 200 mm centre to centre, including cutting the grill to proper opening size for fixing and operation of handles and fixing approved anodised aluminium standard section around the opening, all complete as per requirement and direction of Engineer-in-charge. (Only weight of grill to be measured for payment).		M.T		
	Providing and fixing aluminum tubular handle bar 32 mm outer dia, 3.0 mm thick & 2100 mm long with SS screws etc. complete as per direction of Engineerin-Charge. Anodized (AC 15) aluminum tubular handle bar	4.00	EACH		
	Providing and fixing aluminium hanging floor door stopper ISI marked anodised (anodic coating not less than grade AC 10 as per IS : 1868) transparent or dyed to required colour and shade with necessary screws etc. complete. With twin rubber stopper	2.00	EACH		
	Providing and fixing double action hydraulic floor spring of approved brand and manufacture IS : 6315 marked, for doors including cost of cutting floors as required, embedding in floors and cover plates with brass pivot and single piece M.S. sheet outer box with slide plate etc. complete as per the direction of Engineer-in-charge. With Brass cover Plate		EACH		

<u>SECTION XI B</u>					
<u>RENOVATION OF OPD AT PRIMARY HEALTH CENTRES AT KARTHIKAPALLY TALUK,</u>					
<u>ALLAPUZHA DISTRICT, KERALA STATE</u>					
S.No	DESCRIPTION	QTY	UNIT	RATE	AMOUNT
	Providing and fixing 12 mm thick pre laminated particle board flat pressed three layer or graded wood particle board conforming to IS: 12823 Grade I Type II, in paneling fixed in aluminum doors, windows shutters and partition frames with C.P. brass / stainless steel screws etc. complete as per architectural drawings and directions of Engineer-inCharge. Pre-laminated particle board with decorative lamination on both sides	8.00	SQM		
	24 mm thick factory made PVC door shutters made of styles and rails of a uPVC hollow section of size 59x24 mm and wall thickness 2 mm (\pm 0.2 mm) with inbuilt edging on both sides. The styles and rails mitred and joint at the corners by means of M.S. galvanised/ plastic brackets of size 75x220 mm having wall thickness 1.0 mm and stainless steel screws. The styles of the shutter reinforced by inserting galvanised M.S. tube of size 20x20 mm and 1 mm (\pm 0.1 mm) wall thickness. The lock rail made up of 'H' section, a uPVC hollow section of size 100x24 mm and 2 mm (\pm 0.2 mm) wall thickness, fixed to the shutter styles by means of plastic/galvanised M.S. 'U' cleats. The shutter frame filled with a uPVC multi-chambered single panel of size not less than 620 mm, having over all thickness of 20 mm and 1 mm (\pm 0.1 mm) wall thickness. The panels filled vertically and tie bar at two places by inserting horizontally 6 mm galvanised M.S. rod and fastened with nuts and washers, complete as per manufacturer's specification and direction of Engineer-in-charge. (For W.C. and bathroom door shutter).		SQM		
	Providing and fixing cup board shutters 25 mm thick, with Pre-laminated flat pressed three layer particle board or graded wood particle board IS: 12823 marked, exterior grade (Grade I Type II), having one side decorative lamination and other side balancing lamination, including IInd class teak wood lipping of 25 mm wide x12 mm thick with necessary screws and bright finished stainless steel piano hinges, complete as per direction of the Engineer-in-Charge		SQM		

<u>SECTION XI B</u>					
<u>RENOVATION OF OPD AT PRIMARY HEALTH CENTRES AT KARTHIKAPALLY TALUK,</u>					
<u>ALLAPUZHA DISTRICT, KERALA STATE</u>					
S.No	DESCRIPTION	QTY	UNIT	RATE	AMOUNT
ROOFING					
	""""Supplying and embedding P.V.C rain water pipes of approved quality embedded inside the RC columns/masonry in position with all necessary specials like shoes , bends or any other specials required to suit site conditions etc., jointed with wavin cement and lubricants with necessary MS clamps,brackets ,bolts and nuts all complete as directed. 110mm dia-6kg/sq.cm"		R.M		
	Providing and fixing 15 cm wide, 45 cm overall semi-circular plain G.S. sheet gutter with iron brackets 40x3mm size, bolts, nuts and washers etc., including making necessary connections with rain water pipes complete. 0.63 mm thick with zinc coating not less than 275 gm/m ²		R.M		
	Supply and Laying in cladding & Roofing COLOUR COATED sheet with guard flim made out of 0.5mm TCT 550MPa cold rolled sheet with hot dip metallic coating of Aluminium Zinc alloy 150gms/sq.m.The colour shall have a total coating thickness of 35 microns of an super Polyester colorbond XRW quality paint system or equivalent as per AS/NZS-2728:1997 (category 3), comprising of 20 microns exterior coat on top surface and 5 micron reverse coat on back surface over 5 micron primer coat on both surfaces and having 975/1000mm cover width with 26mm high crest at 195/200mm c/c in lengths as approved by Architect also to suit to site requirements and fixed with necessary suitable imported galvanized carbon steel self drilling and self tapping screws of BUILDEX or corroshield confirming to ASTM 3566-1990 (class- III) of required diameter and length as approved all complete with EPDM sealing washers, foam fillers wherever necessary, silicon sealent wherever necessary. The RAL Colour shall be 9006. No extra payable due to	168.00	SQM		

<u>SECTION XI B</u>					
<u>RENOVATION OF OPD AT PRIMARY HEALTH CENTRES AT KARTHIKAPALLY TALUK,</u>					
<u>ALLAPUZHA DISTRICT, KERALA STATE</u>					
S.No	DESCRIPTION	QTY	UNIT	RATE	AMOUNT
	shade selection.				
	Same as item above but with polycarbonate sheet of 2mm thick (embossed) in cladding to suit the profile of the roof sheeting.(Only laid area without overlapping will be measured for payment.) all as per architectural drawings.		SQM		
PLASTERING					
	Prepare surfaces and plaster with CM 1:3(1 cement, 3 sand) ,12mm minimum thick (sponge finish) to ceiling sides and soffit of beams and columns and other interior and exterior RCC surfaces not contiguous to masonry.	76.00	M.SQ		
	Prepare surfaces and plaster with CM 1:5(1 cement, 5 sand) ,12mm minimum thick to all interior faces of walls (sponge finish) including RCC surfaces not contiguous to masonry.Necessary internal grooves of size 10mmx10mm shall be carried out as shown/directed by engineer-in-charge.		M.SQ		
PAINTING					
	Prepare surfaces and paint two coats of plastic emulsion paint of approved colour over two coats of Gypsum punning of 6 mm minimum thick and primer all complete as per manufacturers specifications to all ceilings in all floors.		M.SQ		
	Distempering with oil bound washable distemper of approved brand and manufacture to give an even shade : Old work (one or more coats)	1158.00	M.SQ		
	Painting wood work with Deluxe Multi Surface Paint of required shade. Two or more coat applied @ 0.90 ltr/10 sqm over an under coat of primer applied @0.75 ltr/10 sqm of approved brand and manufacture		M.SQ		

<u>SECTION XI B</u>					
<u>RENOVATION OF OPD AT PRIMARY HEALTH CENTRES AT KARTHIKAPALLY TALUK,</u>					
<u>ALLAPUZHA DISTRICT, KERALA STATE</u>					
S.No	DESCRIPTION	QTY	UNIT	RATE	AMOUNT
	Prepare surfaces and paint with 3 coats (each coat of 25 micron) of synthetic enamel paint of approved make and shade over a coat of approved anticorrosive yellow primer (25 micron) on structural steel work, Cold rolled section,gutter at all heights.The finished surface should show uniform and uneven coverage of paint shall not be acceptable.	2.00	MT		
	Providing and applying plaster of paris putty of 2 mm thickness over plastered surface to prepare the surface even and smooth complete.	25.00	M.SQ		
	Removing white or colour wash by scrapping and sand papering and preparing the surface smooth including necessary repairs to scratches etc. complete	1870.00	M.SQ		
	Finishing walls with Acrylic Smooth exterior paint of required shade: Old work (Two or more coat applied @ 1.67 ltr/ 10 sqm) on existing cement paint surface	712.00	M.SQ		
DISMANTLING					
	Dismantling plastered brickwalls in cement mortar including cleaning, stacking the useful materials as directed by engineer-in-charge and dumping the dismantled debris as indicated at site, levelling, consolidating, all complete as directed and disposing the debris away from site all complete as directed.	1.00	M.CUBE		
	Dismantling the existing RCC concrete including cutting the reinforcement, stacking the useful materials as directed by engineer-in-charge, dumping the dismantled debris as indicated at site, leveling, consolidating, all complete as directed and disposal of debris away from site all complete.		M.CUBE		
	Dismantling Aluminium partition including disposing the debris away from site as directed by engineer in charge all complete.	3.00	SQM		

<u>SECTION XI B</u>					
<u>RENOVATION OF OPD AT PRIMARY HEALTH CENTRES AT KARTHIKAPALLY TALUK,</u>					
<u>ALLAPUZHA DISTRICT, KERALA STATE</u>					
S.No	DESCRIPTION	QTY	UNIT	RATE	AMOUNT
	Dismantling Tile Flooring and Walls & Roof and disposing the debris away from site all complete as directed.	1.00	M.SQ		
PATHWAY					
	Providing and laying cement concrete paver blocks of thick 60mm made out of M25 design mix of shape and profile as approved by architect .The rate should include cost of necessary excavation, RIVER SAND upto a depth of 50mm pointing in CM 1:3 all complete as directed.(For purpose of payment total laid area in length multiplied by width in plan will be paid.) Tenderer to submit necessary pamphlets along with tender.		M.SQ		
PLUMBING					
	Providing and fixing gun metal gate valve with C.I. wheel of approved quality -25MM	0	M.SQ		
	Providing and fixing C.P. brass angle valve for basin mixer and geyserpoints of approved quality conforming to IS:8931 a) 15 mm nominal bore: 15 mm nominal bore.Make:Hindware,Cera,Jaquar etc..	0	EACH		
	Providing and fixing PTMT Bottle Trap for Wash basin and sink.Bottle trap 38mm single piece moulded with height of 270mm, effective length of tail pipe 260mm from the centre of the waste coupling 77mm breadth with 25mm minimum water seal, weighing not less than 263gms.		EACH		
	Providing and fixing trap of self cleansing design with screwed down orhinged grating with or without vent arm complete, including cost of cuttingand making good the walls and floors :100 mm inlet and 100 mm outlet	0	EACH		

SECTION XI B

RENOVATION OF OPD AT PRIMARY HEALTH CENTRES AT KARTHIKAPALLY TALUK,
ALLAPUZHA DISTRICT, KERALA STATE

S.No	DESCRIPTION	QTY	UNIT	RATE	AMOUNT
	Constructing brick masonry manhole in cement mortar 1:4 (1 cement : 4 coarse sand) with R.C.C. top slab with 1:2:4 mix (1 cement : 2 coarse sand : 4 graded stone aggregate 20 mm nominal size), foundation concrete 1:4:8 mix (1 cement : 4 coarse sand : 8 graded stone aggregate 40 mm nominal size), inside plastering 12 mm thick with cement mortar 1:3 (1 cement : 3 coarse sand) finished with floating coat of neat cement and making channels in cement concrete 1:2:4 (1 cement : 2 coarse sand : 4 graded stone aggregate 20 mm nominal size) finished with a floating coat of neat cement complete as per standard design : With common burnt clay F.P.S designation 7.5		EACH		
	Providing and fixing square – mouth PVC. Gully trap grade “A” complete with CI grating brick masonry chamber with water tight CI cover with frame of 300 x 300mm size (inside) the weight of cover to be not less than 4.50 kg and frame to be not less than 2.70 kg as per standard design	0	EACH		
	Providing and fixing white vitreous china pedestal type water closet(European type W.C. pan) with seat and lid, 10 litre low level white P.V.C.flushing cistern, including flush pipe, with manually controlled device(handle lever), conforming to IS : 7231, with all fittings and fixturescomplete, including cutting and making good the walls and floors wherever required :W.C. pan with ISI marked white solid plastic seat and lid	0	EACH		
	Providing and fixing wash basin with C.I. brackets, 15 mm C.P. brass pillar taps, 32 mm C.P. brass waste of standard pattern, including painting of fittings and brackets, cutting and making good the walls wherever require:White Vitreous China Wash basin size 630x450 mm with apair of 15 mm C.P. brass pillar taps	0	EACH		

<u>SECTION XI B</u>					
<u>RENOVATION OF OPD AT PRIMARY HEALTH CENTRES AT KARTHIKAPALLY TALUK,</u>					
<u>ALLAPUZHA DISTRICT, KERALA STATE</u>					
S.No	DESCRIPTION	QTY	UNIT	RATE	AMOUNT
	Supplying and providing Polyethylene Septic Tanks unique size and 3 chamber design with all accessories branded like United , for a capacity of 5000 litre (100 flush/day) including all material and labour charge for fittings		Ls		
	Providing and fixing Chlorinated Polyvinyl Chloride (CPVC) pipes, having thermal stability for hot & cold water supply including all CPVC plain & brass threaded fittings i/c fixing the pipe with clamps at 1.00 m spacing. This includes jointing of pipes & fittings with one step CPVC solvent cement and the cost of cutting chases and making good the same including testing of joints complete as per direction of Engineer in Charge. Concealed work including cutting chases and making good the walls etc				
	20 mm nominal outer dia .Pipes	0	RM		
	32 mm nominal outer dia Pipes	0	RM		
	50 mm nominal outer dia Pipes	0	RM		
	Providing and fixing Stainless Steel A ISI 304 (18/8) kitchen sink as per IS: 13983 with C.I. brackets and stainless steel plug 40 mm, including painting of fittings and brackets, cutting and making good the walls wherever required ::(Lowest retail price of sink not less than Rs. 3150)				
	Kitchen sink without drain board, Size -610x510 mm bowl depth 200 mm	0	EACH		
	Providing and fixing PVC Waste pipe for sink or wash basin including PVC waste fittings complete.:Semi rigid pipe 32mm dia	0	EACH		
	Providing and fixing CP Waste coupling for wash basin and sink of approved quality, colour and make. Waste coupling 31mm of 79mm length and 62mm breadth, weighing not less than 45 gms. Make:Hindware,Jaquar etc.,	0	EACH		

<u>SECTION XI B</u>					
<u>RENOVATION OF OPD AT PRIMARY HEALTH CENTRES AT KARTHIKAPALLY TALUK,</u>					
<u>ALLAPUZHA DISTRICT, KERALA STATE</u>					
S.No	DESCRIPTION	QTY	UNIT	RATE	AMOUNT
	Extra for providing opening of required size & shape for wash basin/ kitchen sink in kitchen platform, vanity counter and similar location in marble/ Granite/stone work, including necessary holes for pillar taps etc. including moulding, rubbing and polishing of cut edges etc. complete.	0	EACH		
	Providing and fixing 600x450 mm beveled edge mirror of superior glass (of approved quality) complete with 6 mm thick hard board ground fixed to wooden cleats with C.P. brass screws and washers complete.	0	EACH		
	Providing and fixing PTMT towel rail complete with brackets fixed to wooden cleats with CP brass screws with concealed fitting arrangement of approved quality and colour. 600mm long towel rail with total length of 645mm, width 78mm and effective height of 88mm, weighing not less than 190gms.	0	EACH		
	Providing and fixing PTMT liquid soap container 109mm wide, 125mm high and 112mm distance from wall of standard shape with bracket of the same materials with snap fittings of approved quality and colour. weighing not less than 105 gms.	0	EACH		
	Providing & fixing of CP Health faucet. Hand operated spray unit (instand type)	0	Set		
	Providing and fixing PVC pipes for water supply arrangements including cost pipes, fittings, solvent cement,testing of pipes, labour charges etc complete : Concealed work including cutting chases and making good the wall etc				
	20mm dia. PVC pipe	0	RM		
	25mm dia. PVC pipe	0	RM		
	32mm dia. PVC pipe	0	RM		
	Providing and fixing CP grating of 6mm thick with rim including setting in floor with white cement mortar and making good the floor				

<u>SECTION XI B</u>					
<u>RENOVATION OF OPD AT PRIMARY HEALTH CENTRES AT KARTHIKAPALLY TALUK,</u>					
<u>ALLAPUZHA DISTRICT, KERALA STATE</u>					
S.No	DESCRIPTION	QTY	UNIT	RATE	AMOUNT
	125mm dia	0	EACH		
	Providing and fixing PVC soil, waste and vent pipe to IS : 13592 of SWR quality including all fittings, like : Bends, Tees, Elbows, Collars, junction, inspection doors, cowls, offsets, access pipes, jointing with rubber ring / solvent cement by application of leak proof adhesive like FRP paste including cutting holes in walls and floors and making good. Make:Supreme,Finolex,Prince etc.,				
	50mm dia	0	RM		
	110mm dia	0	RM		
CURTAIN WORK					
	1.Two range of curtain cloth – Type 1 - II.				
	2. Both for doors, windows and partions.				
	3. Assorted colours plain & prints				
	4.Stitched as per site/ size requirement				
	5.Minor modifications in stitching as per site/ size requirement				
	6.Preferred colour (Brown, Cream, Beige)				
	7.Curtain price (including cloth & curtain rod) to be quote in Squire metre				
	8.Stitching for each curtain to be absorb in the price of the cloth generally 2 meters.				
	9.Fast colours, water wash				
	10.Fabric density Non Transparent Composition				
	11.Fabric of curtain shall be soft texture, great shading, drape effect and nice doobby.				
	12.The bracket shall be side mounted and front mounted as required				
	13.First rod mount is 3.5 inches from the wall.				
	14.Where curtain used as a partition/ long length, sufficient support from ceiling should be provided to avoid sagging.				
	15.Rate quoted for fully stitched Curtain with top nepha with punch holes after lining bucramreinforced with SS / PVC islets and lower nepha 200mm double turned.				

<u>SECTION XI B</u>					
<u>RENOVATION OF OPD AT PRIMARY HEALTH CENTRES AT KARTHIKAPALLY TALUK,</u>					
<u>ALLAPUZHA DISTRICT, KERALA STATE</u>					
S.No	DESCRIPTION	QTY	UNIT	RATE	AMOUNT
	Type -I (Surgical Curtain)				
	Curtain fabric weight shall be up to 275-300 (±5%) gsm Composition of fabric shall be polyester yarn I.E. 300 denier fast colour sink age shall be (±5%) Weft and warp shall be polyester / cotton polyester mix	0	M.SQ		
	Type - II (Window & Door Curtain)				
	Curtain fabric weight shall be up to 250-275 (±5%) gsm Composition of fabric shall be polyester yarn I.E. 300 denier fast colour sink age shall be (±5%) Weft and warp shall be polyester / cotton polyester mix	0	M.SQ		
FALSE CEILING					
5	Providing & Fixing of False ceiling shall be provided with Armstrong Lay in (Hot dipped galvanized steel) metal ceiling system 600 X 600 X 5 mm with standard perforation of 2.5 mm dia. (16% open space) and fleece with NRC of 70 & CAC 36 to be laid on Armstrong Grid system. Armstrong Orcal Lay in metal ceiling system consisting of 600 X 600 mm Lay in tiles of pre coated galvanized steel in 0.5 mm thickness in white colour with standard perforation of 2.5 mm dia. and open area of 16 %. The back of tiles should have black acoustical fleece with NRC of .70 & CAC 36 to be laid on Armstrong Grid system with 15 mm wide T section flanges Colour white having rotary stitching on the main Runner, 1200 mm & 600 mm cross Tees, fixed to the structural soffit by Butterfly clip hangers, suspension wires & anchor fasteners as per manufacturers specification. Suspension wires to be provided at every 600 mm c/c with two numbers ties on each anchor fastener, Perimeter trim of Trulok wall angle in white colour secured to wall at 450 mm maximum centers.	15.00	M.SQ		
	Providing and Laying kerb channel (Well ring) 120 cm wide and 75 mm thick of CC 1:3:6 over 150 mm thick compacted bed of CONCRETE of well rammed and consolidated and grouted with fine sand.		EACH		

<u>SECTION XI B</u>					
<u>RENOVATION OF OPD AT PRIMARY HEALTH CENTRES AT KARTHIKAPALLY TALUK,</u> <u>ALLAPUZHA DISTRICT, KERALA STATE</u>					
S.No	DESCRIPTION	QTY	UNIT	RATE	AMOUNT
SUB TOTAL (Civil)					
ELECTRICAL WORK					
1	Point wiring in PVC conduit with modular type switch.				
	Wiring for light point/fan point/exhaust fan point /call bell point with 1.5 sq mm FR PVC insulated copper conductor single core cable in surface/recessed medium class PVC conduit, with modular switch, modular plate, suitable PVC box and earthing the point with 1.5 sq.mm FR PVC insulated copper conductor single core cable etc as required.				
	Group C	10	Point		
2	Wiring through PVC conduit				
	Wiring for circuit/submain wiring along with earth wire with the following sizes of FR PVC insulated copper conductor, single core cable in surface/recessed medium class PVC conduit as required. (Make:Havells/Finolex/V-guard/Polycab)				
A	2X1.5 sq.mm + 1X1.5 sq.mm earth wire	45	Metre		
B	2X2.5 sq.mm + 1 X2.5 sq mm earth wire	45	Metre		
c	2X4 sq.mm + 1X4 sq.mm earth wire	0	Metre		
2.1	Telephone wiring in existing conduit:				
	Supplying and drawing following pair 0.5 sq mm FR PVC insulated annealed copper conductor, unarmored telephone cable in the existing surface/ recessed steel/ PVC conduit as required.				
a	2 Pair	0	Metre		
3	A/C point				

<u>SECTION XI B</u>					
<u>RENOVATION OF OPD AT PRIMARY HEALTH CENTRES AT KARTHIKAPALLY TALUK,</u>					
<u>ALLAPUZHA DISTRICT, KERALA STATE</u>					
S.No	DESCRIPTION	QTY	UNIT	RATE	AMOUNT
	S/F 20A SPN MCB industrial socket outlet: Supplying and fixing 20 amps, 240 volts, SPN industrial type, socket outlet, with 2 pole and earth, metal enclosed plug top alongwith 20 amps "C" curve, SP, MCB, in sheet steel enclosure, on surface or in recess, with chained metal cover for the socket out let and complete with connections, testing and commissioning etc. as required.(Make: Legrand/Havells/HPL)	0	Point		
4	Modular type blanking plate: Supplying and fixing modular blanking plate on the existing modular plate & switch box excluding modular plate as required.(Make: Legrand/Havells/HPL)	3	Each		
5	Modular boxes, bases & cover plate: Supplying and fixing following size/modules, GI box along with modular base & cover plate for modular switches in recess etc as required.(Make: Legrand/Havells/HPL)				
a	3 module	3	Each		
b	6 module	3	Each		
6	Modular type switch/socket: Supplying and fixing following modular switch/socket on the existing modular plate & switch box including connections but excluding modular plate etc as required. (Make: Legrand/Havells/HPL)				
a	5/6 Amps switch	7	Each		
b	3 pin 5/6 Amp socket outlet	7	Each		
c	15/16 Amps switch	0	Each		
d	6pin 15/16 Amps (universal) socket outlet	0	Each		
e	Telephone socket outlet	0	Each		
7	S/F PVC conduit:				

<u>SECTION XI B</u>					
<u>RENOVATION OF OPD AT PRIMARY HEALTH CENTRES AT KARTHIKAPALLY TALUK,</u>					
<u>ALLAPUZHA DISTRICT, KERALA STATE</u>					
S.No	DESCRIPTION	QTY	UNIT	RATE	AMOUNT
	Supplying and fixing of following sizes of medium class PVC conduit along with accessories in surface/recess including cutting the wall and making good the same in case of recessed conduit as required.(ISI Make)				
a	20 mm	45	Metre		
b	25 mm	0	Metre		
8	ITC Fluorescent fitting directly on surface: Installation, testing and commissioning of pre-wired, fluorescent fitting / compact fluorescent fitting/LED of all types, complete with all accessories and tube etc. directly on ceiling/ wall, including connection with 1.5 sq. mm FR PVC insulated, copper conductor, single core cable and earthing etc. as required.	7	Each		
9	ITC Ceiling fan: Installation, testing and commissioning of ceiling fan, including wiring the down rods of standard length (upto 30 cm) with 1.5 sq. mm FR PVC insulated, copper conductor, single core cable etc. as required.	3	Each		
10	Supplying and fixing two module stepped type electronic fan regulator on the existing modular plate switch box including connections but excluding modular plate etc. as required.	3	Each		
11	CABLE SUPPLY, LAYING AND TERMINATION				
	Wiring for circuit/ submain wiring along with earth wire with the following sizes of FR PVC insulated copper conductor, single core cable in surface/ recessed medium class PVC conduit as required.				
a	From Main to DB				
	2 X 4 sq. mm + 1 X 4 sq. mm earth wire	15	Metre		

<u>SECTION XI B</u>					
<u>RENOVATION OF OPD AT PRIMARY HEALTH CENTRES AT KARTHIKAPALLY TALUK,</u>					
<u>ALLAPUZHA DISTRICT, KERALA STATE</u>					
S.No	DESCRIPTION	QTY	UNIT	RATE	AMOUNT
12	Supply of 10W LED fittings with decorative end cap, powder coated CRCA steel channel complete with all electrical accessories like electronic ballast, lamp holder, 10W lamp etc complete as required. (Havells LHEWEBP7IN1W010/	7	Each		
12.1	Supply and installation of 18 W CFL with its all accessories.	0	Each		
13	Supply and installation of 1200 mm sweep Ceiling fan, white colour, 5 star rated as per BEE complete with blades, down rod, shackle, canopy etc (Make Havells/bajaj/usha/V-guard/Crompton)	3	Each		
13.1	Supply and installation wall fan, white colour, 5 star rated as per BEE complete with its all accessories (Make Havells/bajaj/usha/V-guard)	0	Each		
14	S/F SP & N DB:				
	Supplying and fixing following way prewired SP&N MCB, distribution board of steel sheet for 240 volts on surface/recess complete with loose wire box, terminal connectors for all incoming and outgoing circuits, duly prewired with suitable size FR PVC insulated copper conductor up to terminal blocks, tinned copper bus bar, neutral link, earth bar, detachable gland plate, interconnections, powder painted including earthing etc.as required(But without MCB/RCCB/Isolator) (Make: Legrand/Havells/HPL)				
	8 way SPN, double door	1	Each		
14.1	S/F of DP ISOLATOR				
	Supplying and fixing following rating, double pole, (single phase and neutral), 240 volts, ISOLATOR having a sensitivity current upto 100 to 300 milliamperes in the existing MCB DB complete with connections, testing and commissioning etc, as required. (Make: Legrand/Havells/HPL)				

<u>SECTION XI B</u>					
<u>RENOVATION OF OPD AT PRIMARY HEALTH CENTRES AT KARTHIKAPALLY TALUK,</u>					
<u>ALLAPUZHA DISTRICT, KERALA STATE</u>					
S.No	DESCRIPTION	QTY	UNIT	RATE	AMOUNT
	40 A, DP isolator	1	Each		
14.2	S/F of SP MCB				
	Supplying and fixing 6 amps to 10 amps rating, 240 Volts, "C" series, miniature circuit breaker suitable for lighting and other loads of following poles in the existing MCB DB complete with connections, testing and commissioning etc as required.(Make: Legrand/Havells/HPL)				
	6/10A SP MCB	6	Each		
15	Miscellaneous Items				
15.1	Miscellaneous electrical work, removing of existing conduits and interconnections of light,6A socket/16A socket/A/C point from existing DB	0	LS		
15.2	Miscellaneous work for supply and fixing of 1-tube light & 1- 3 star rated ceiling fan with its all accessories only as per the direction of engineer in charge.[ISI MAKE]	0	Ls		
	Sub Total (Electrical)				
				Grand Sub Total (Civil & Electrical) (Rs:)	
				GST	
				Grand Total	
I agree to complete the work as per the schedule at the rate quoted by me as above.					
Date:				BIDDER	