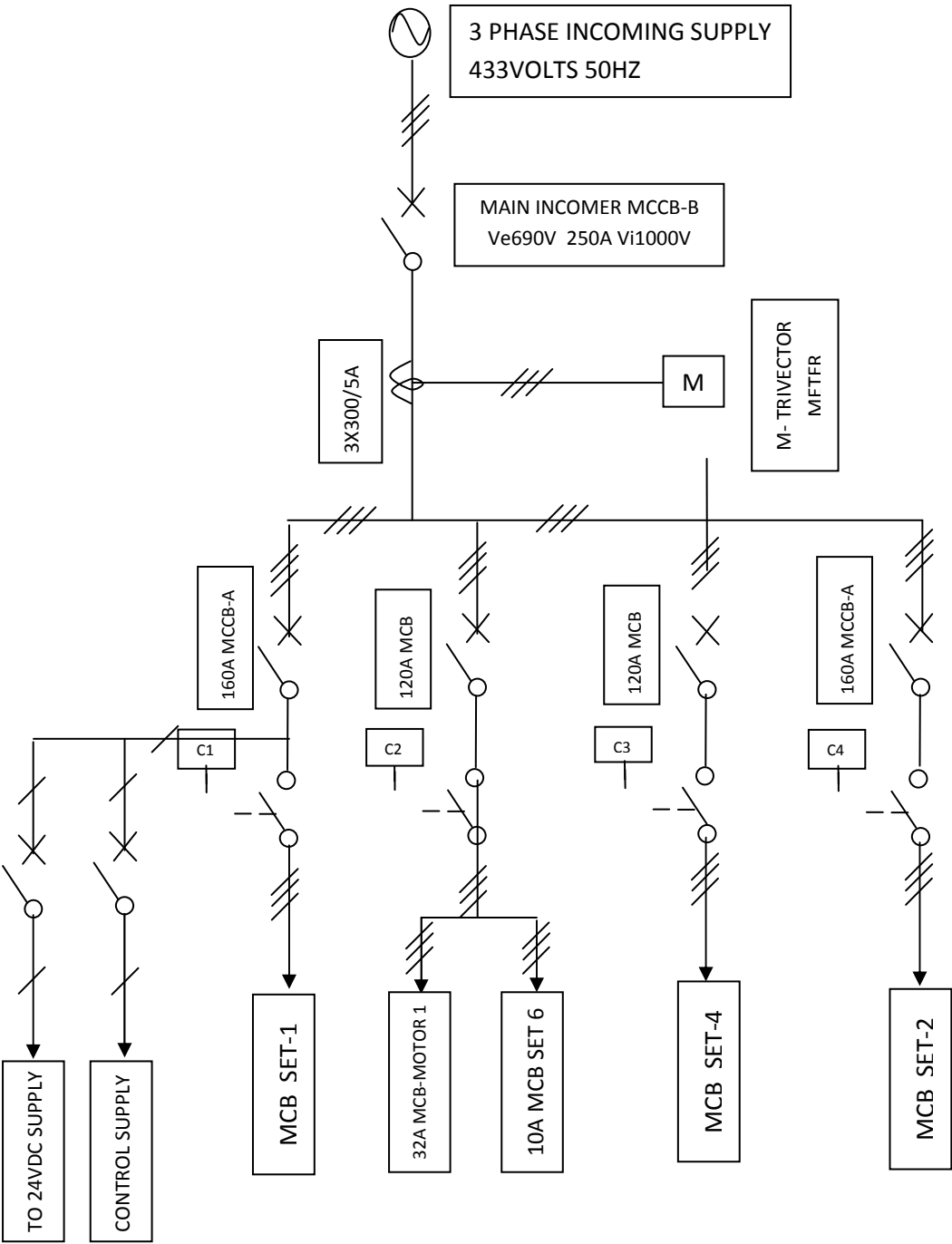
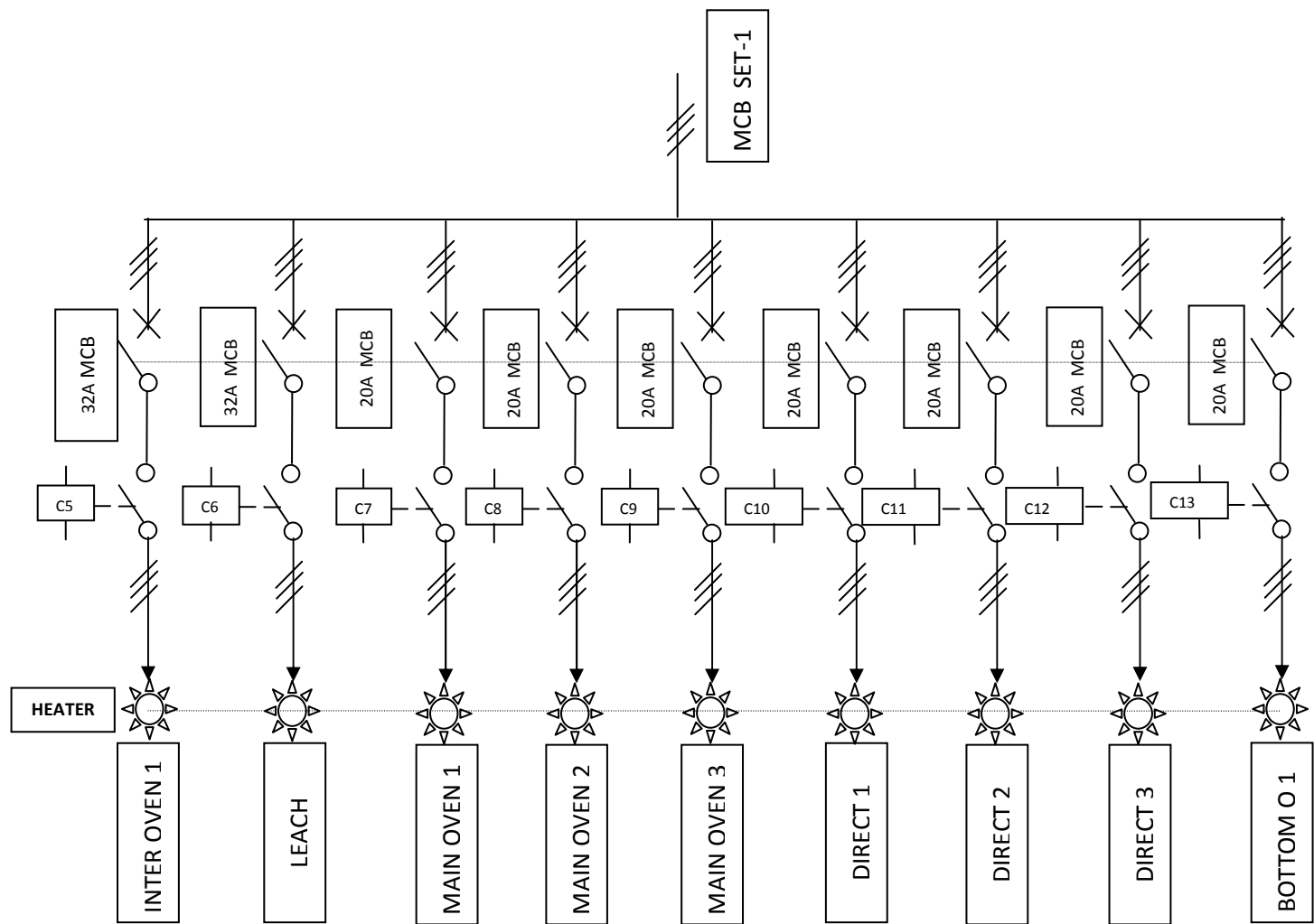


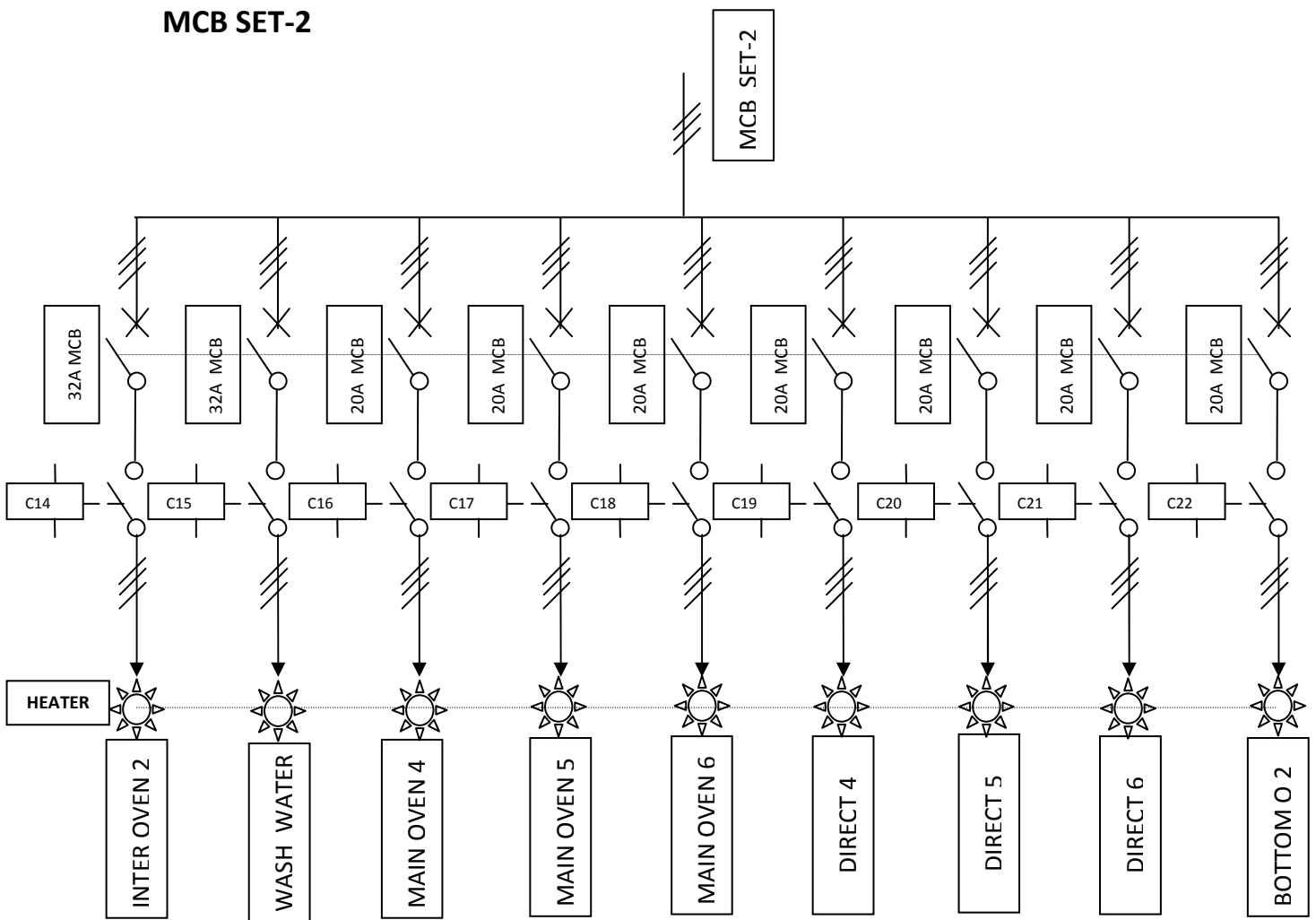
PANEL BOARD NO.1:- **MAIN CONTROL PANEL-SLD**



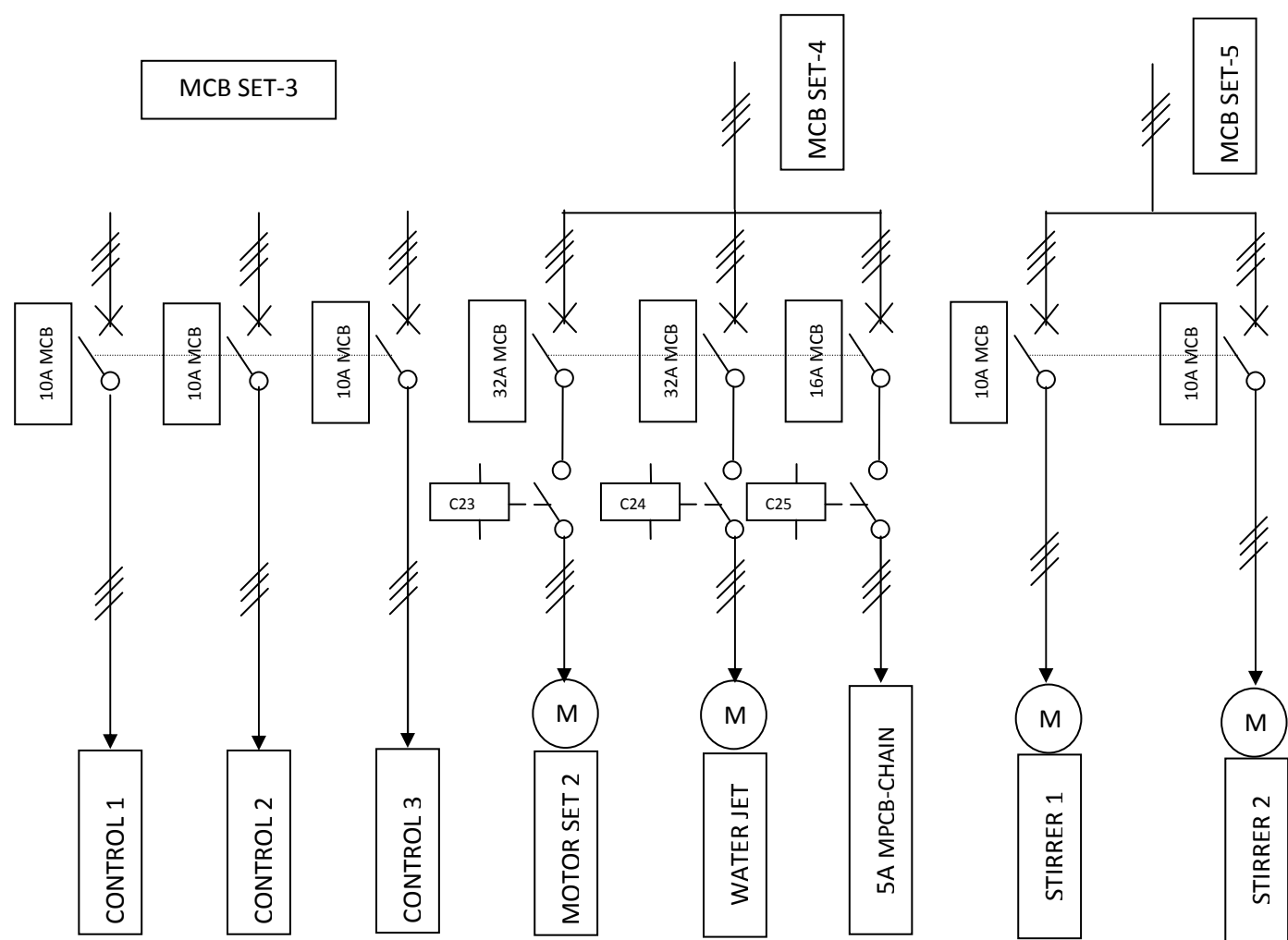
MCB SET-1



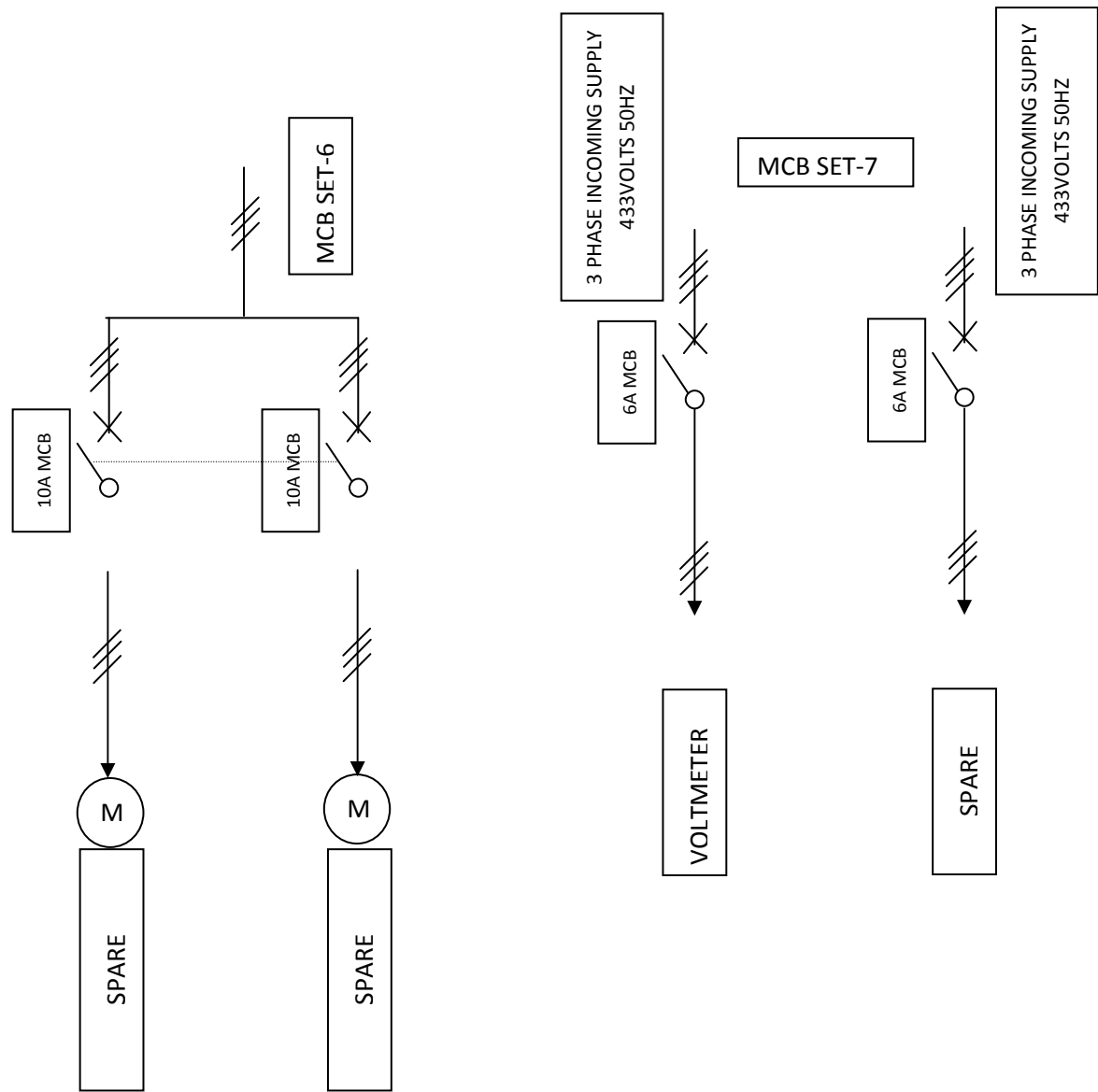
MCB SET-2



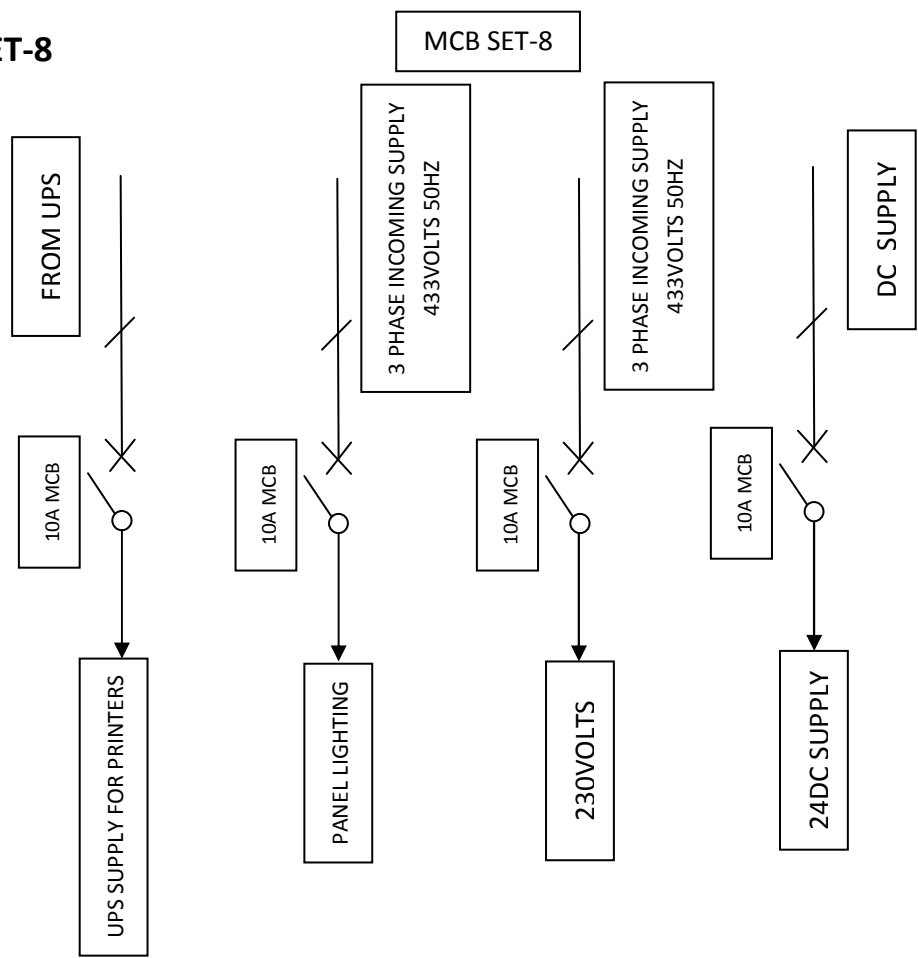
MCB SET-3, 4 & 5



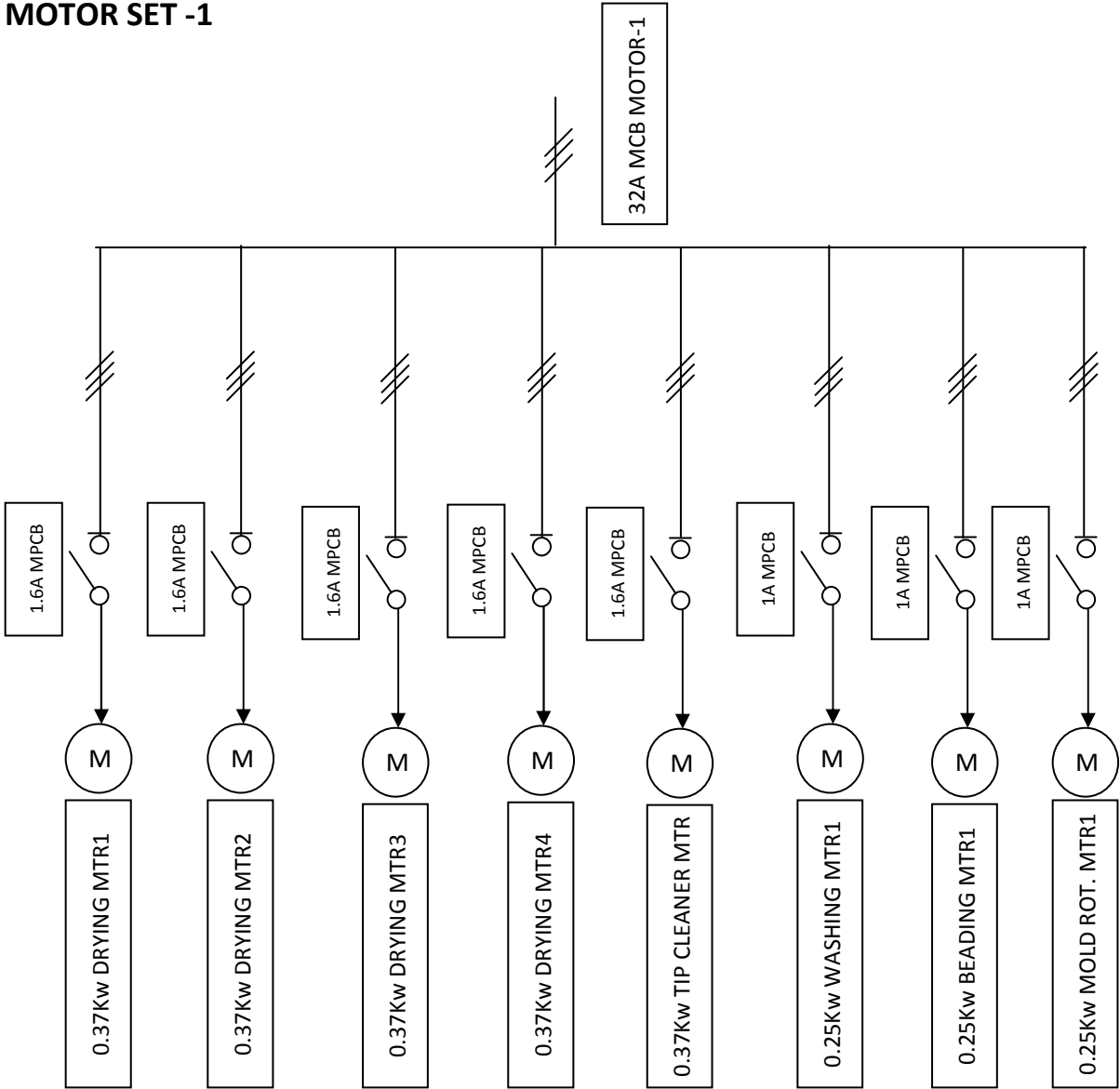
MCB SET-6&7



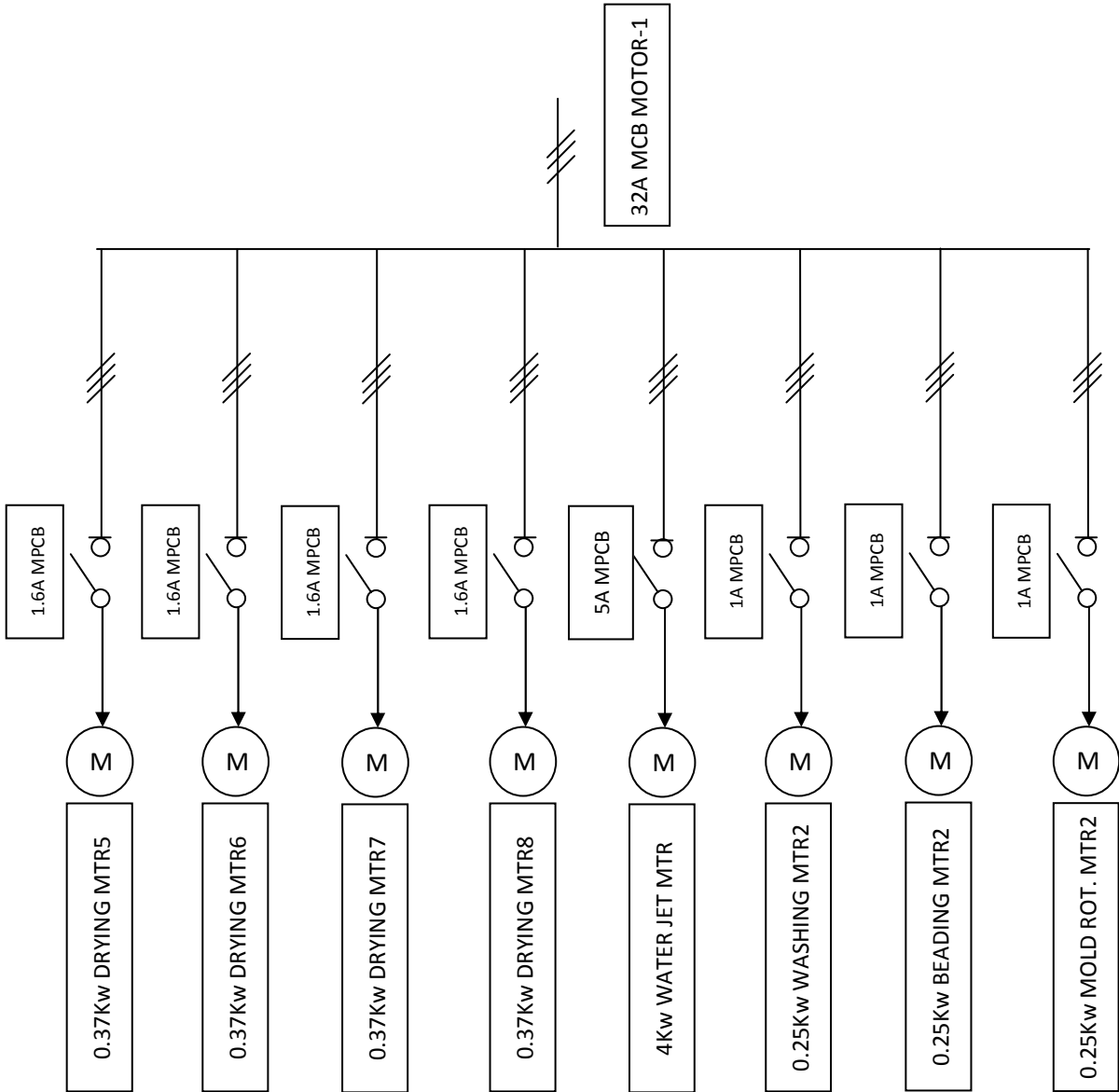
MCB SET-8



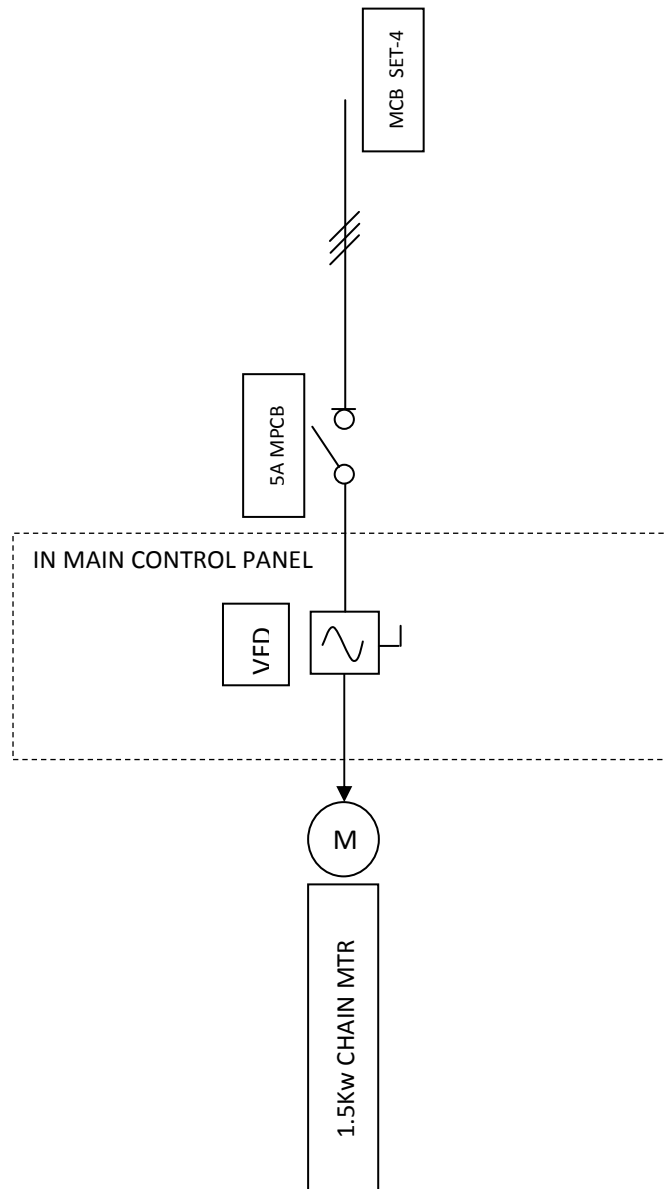
MOTOR SET -1



MOTOR SET 2

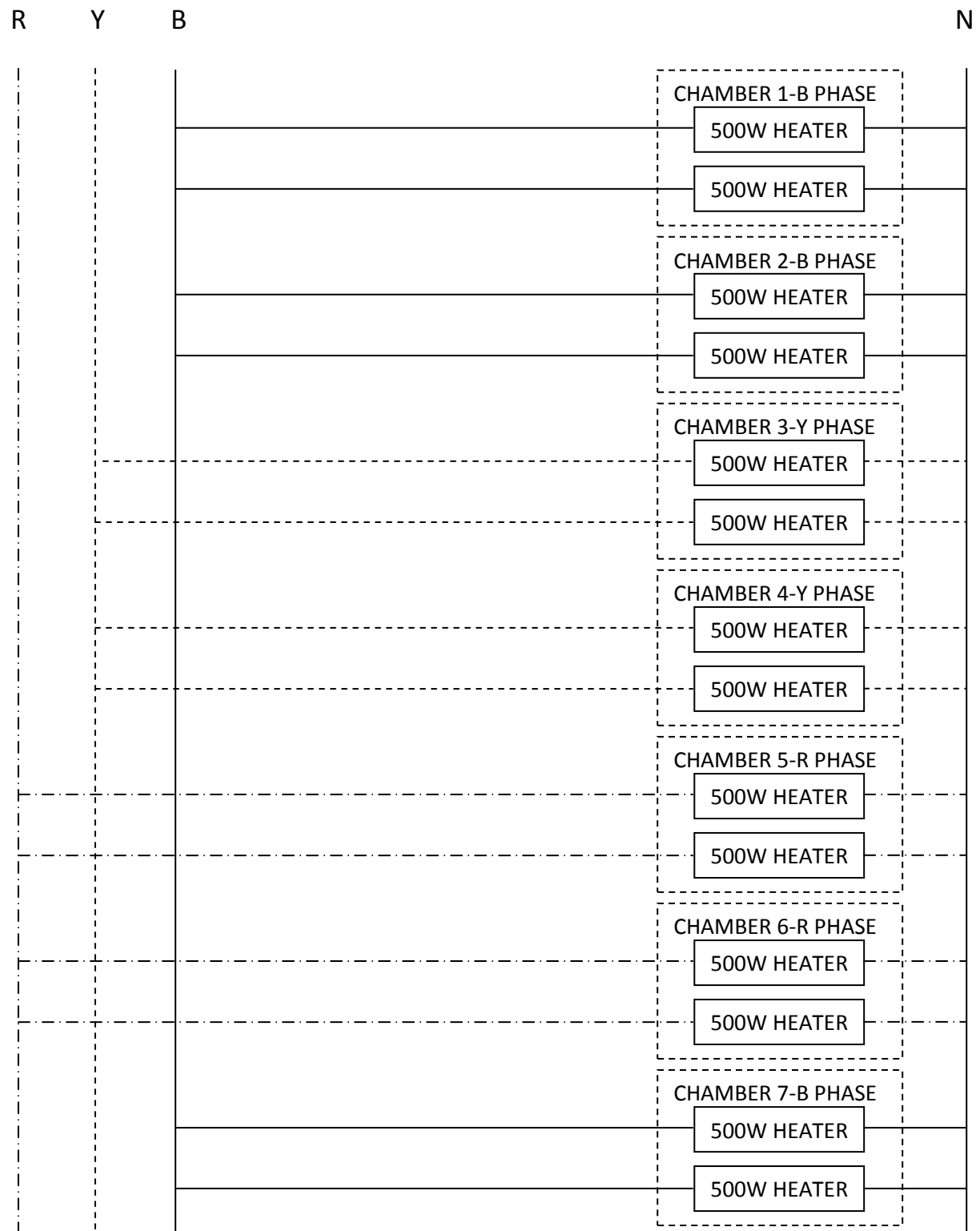


CHAIN MPCB



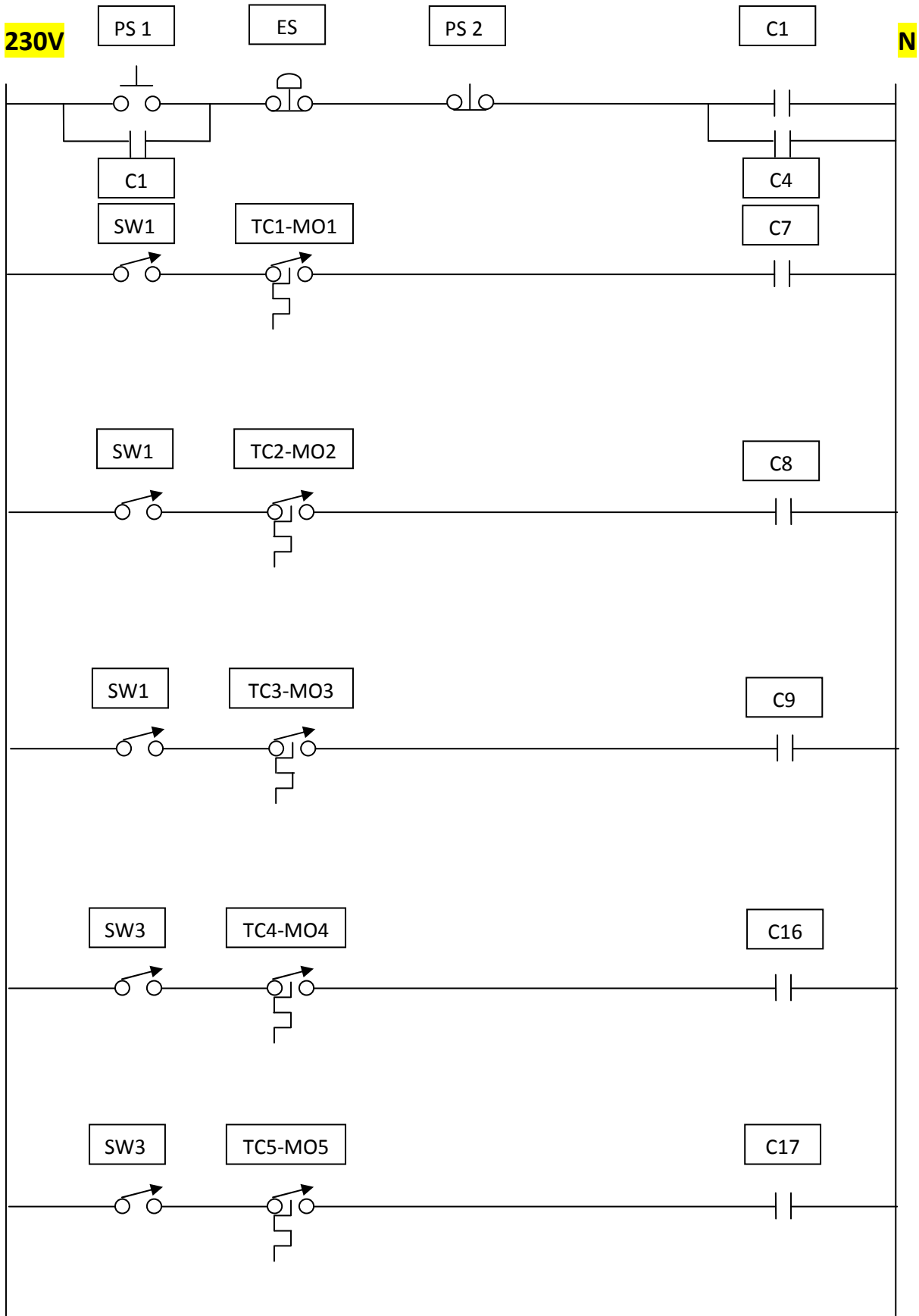
HEATER WIRING-MAIN OVEN 1,2,3,4,5&6

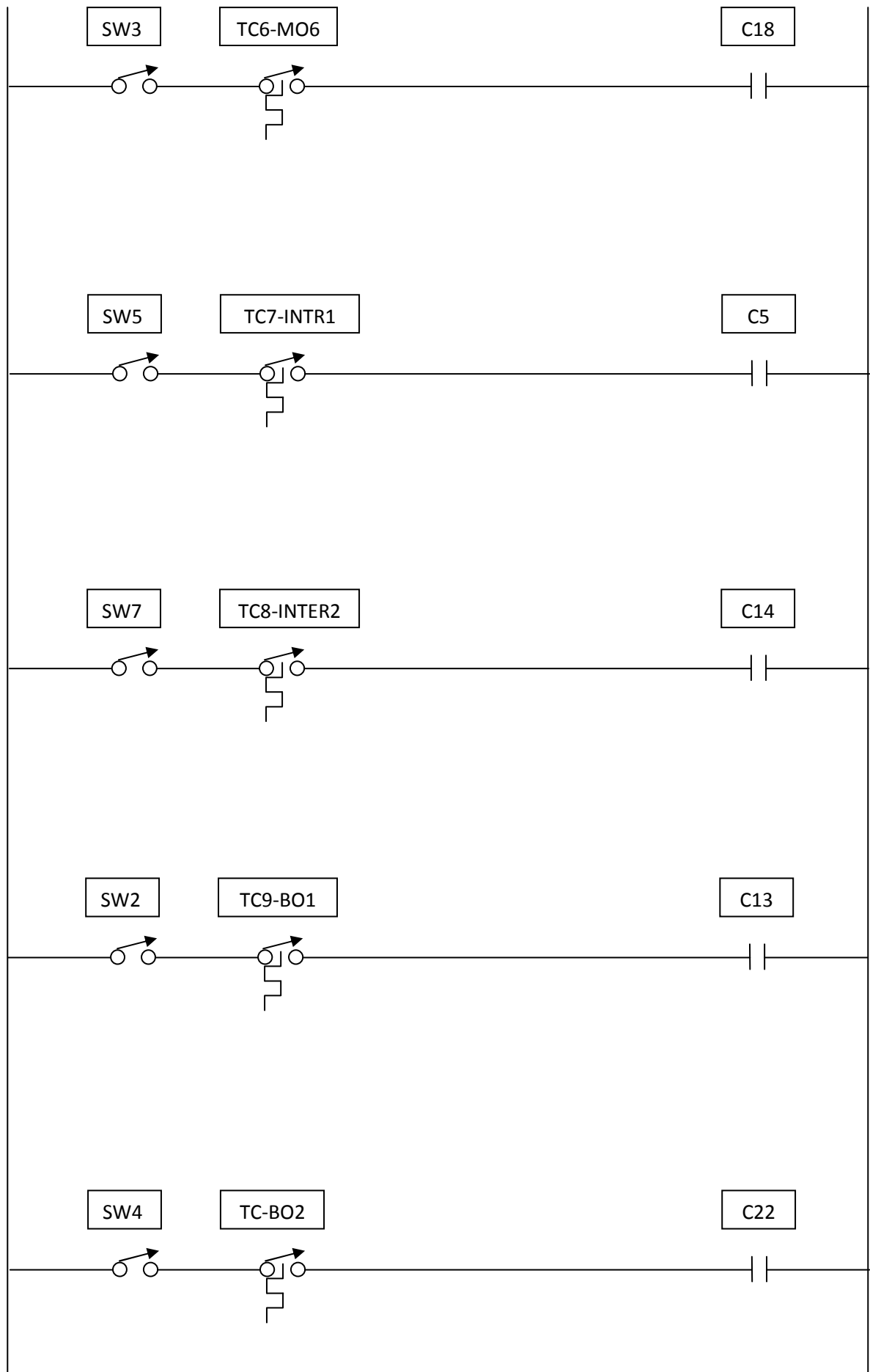
M.O.-1 Consists of seven chambers and each chamber has two zig-zag heaters (500Watts), total load of M.O.1 is 7chambers*2heaters*500Watts= 7000Watts

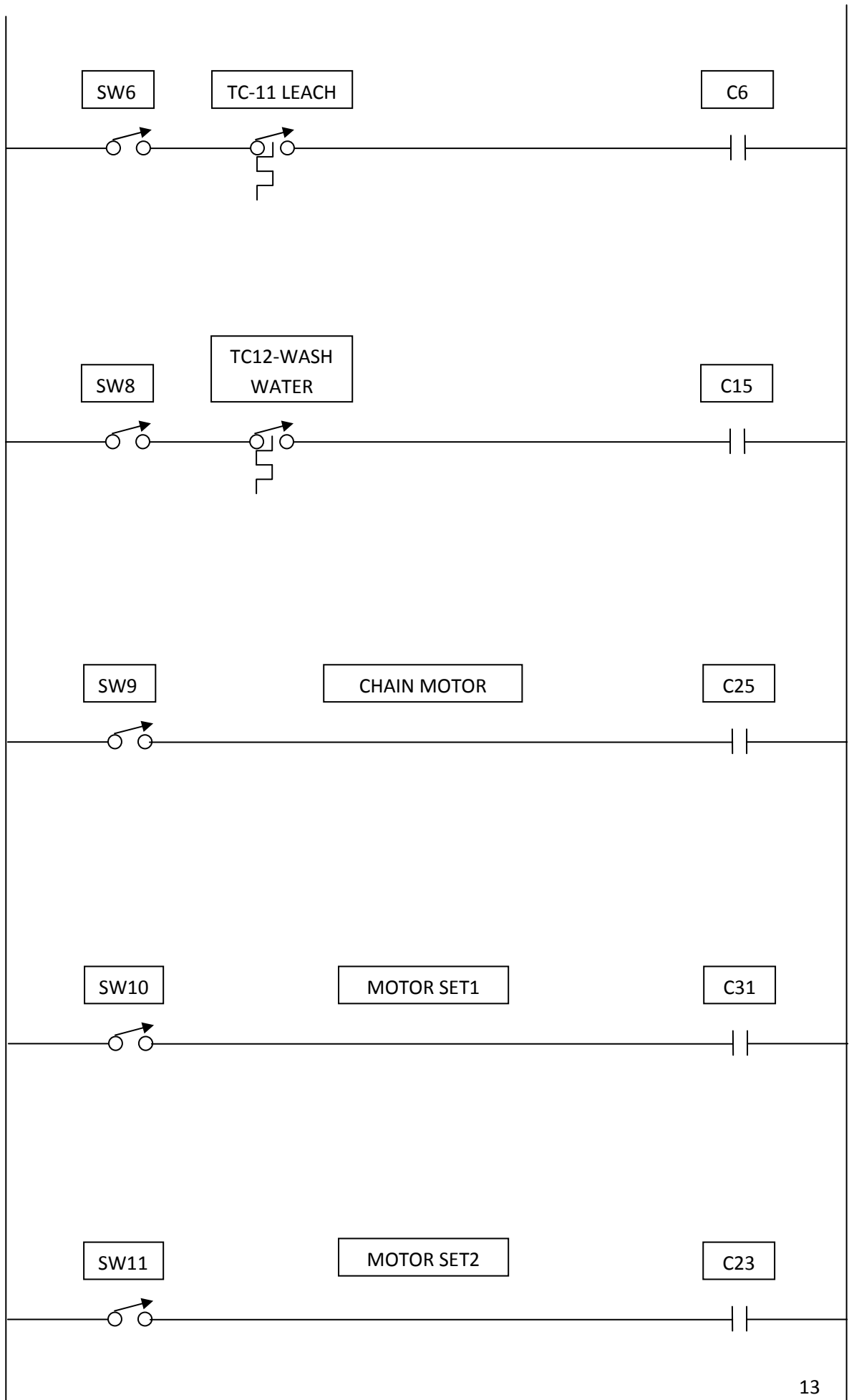


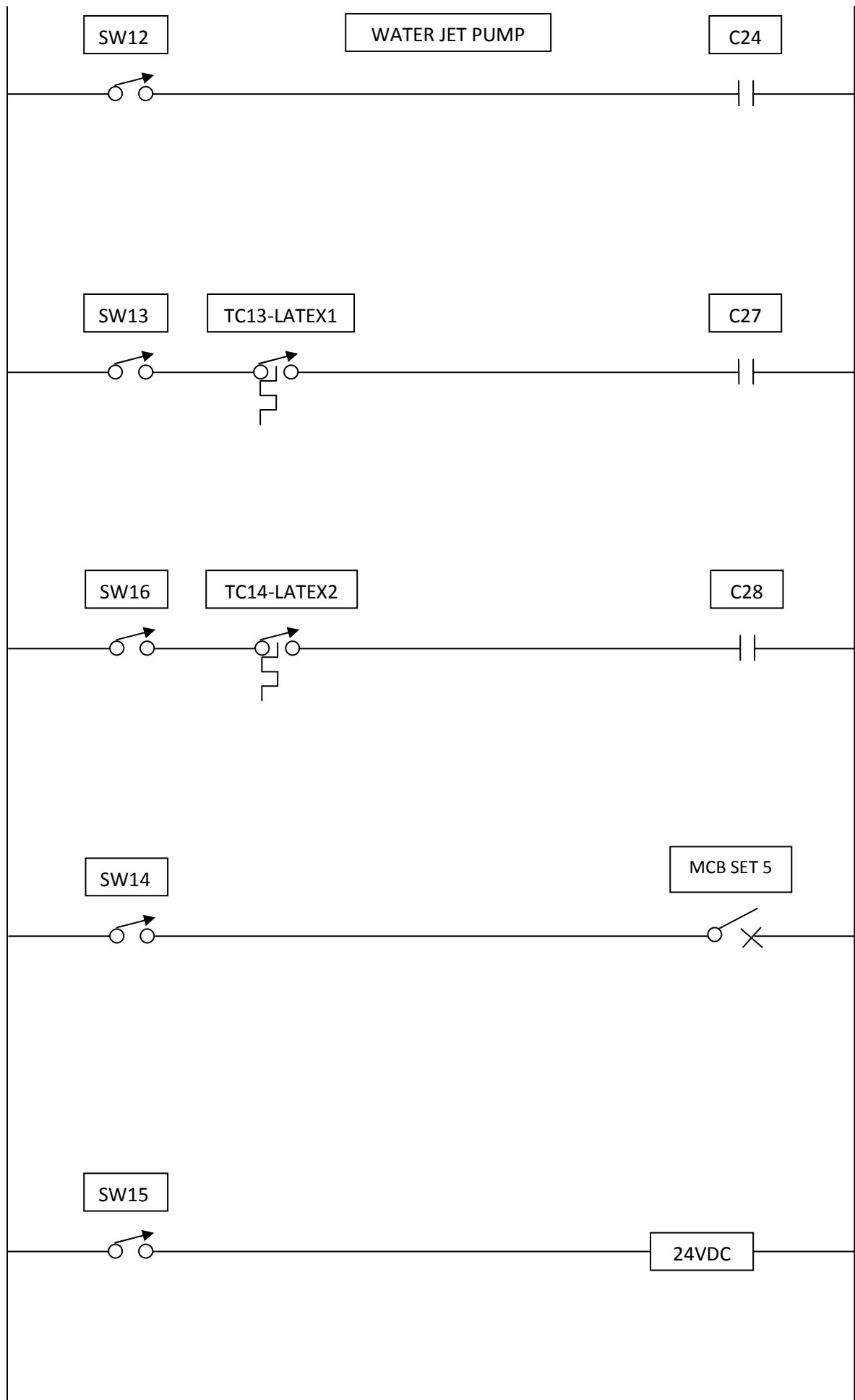
Similarly load sharing in all other chambers has to be ensured by equally distributing the heating loads so that there is no unbalance between three phases.

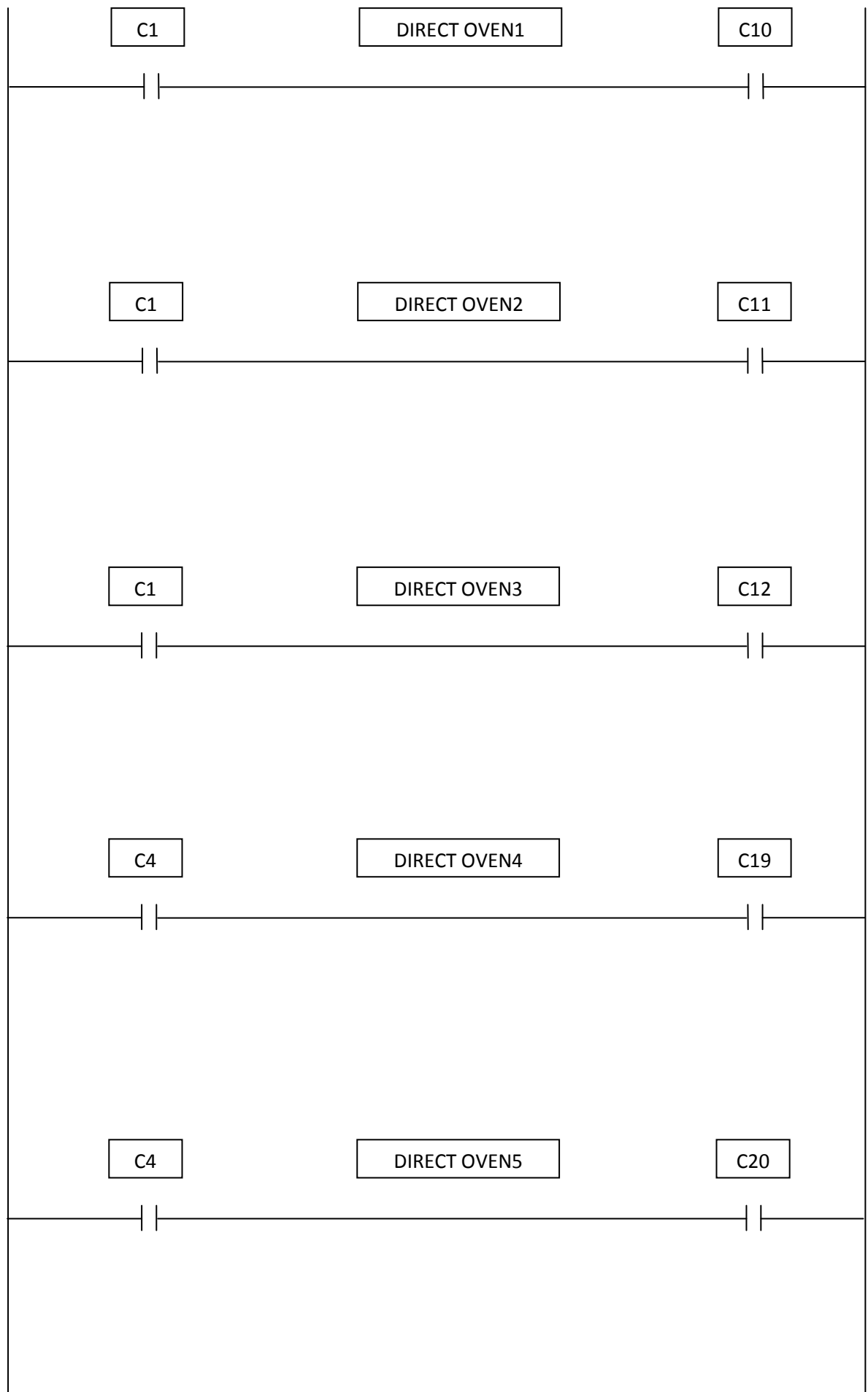
CONTACTOR COIL WIRING-MAIN CONTROL PANEL BOARD

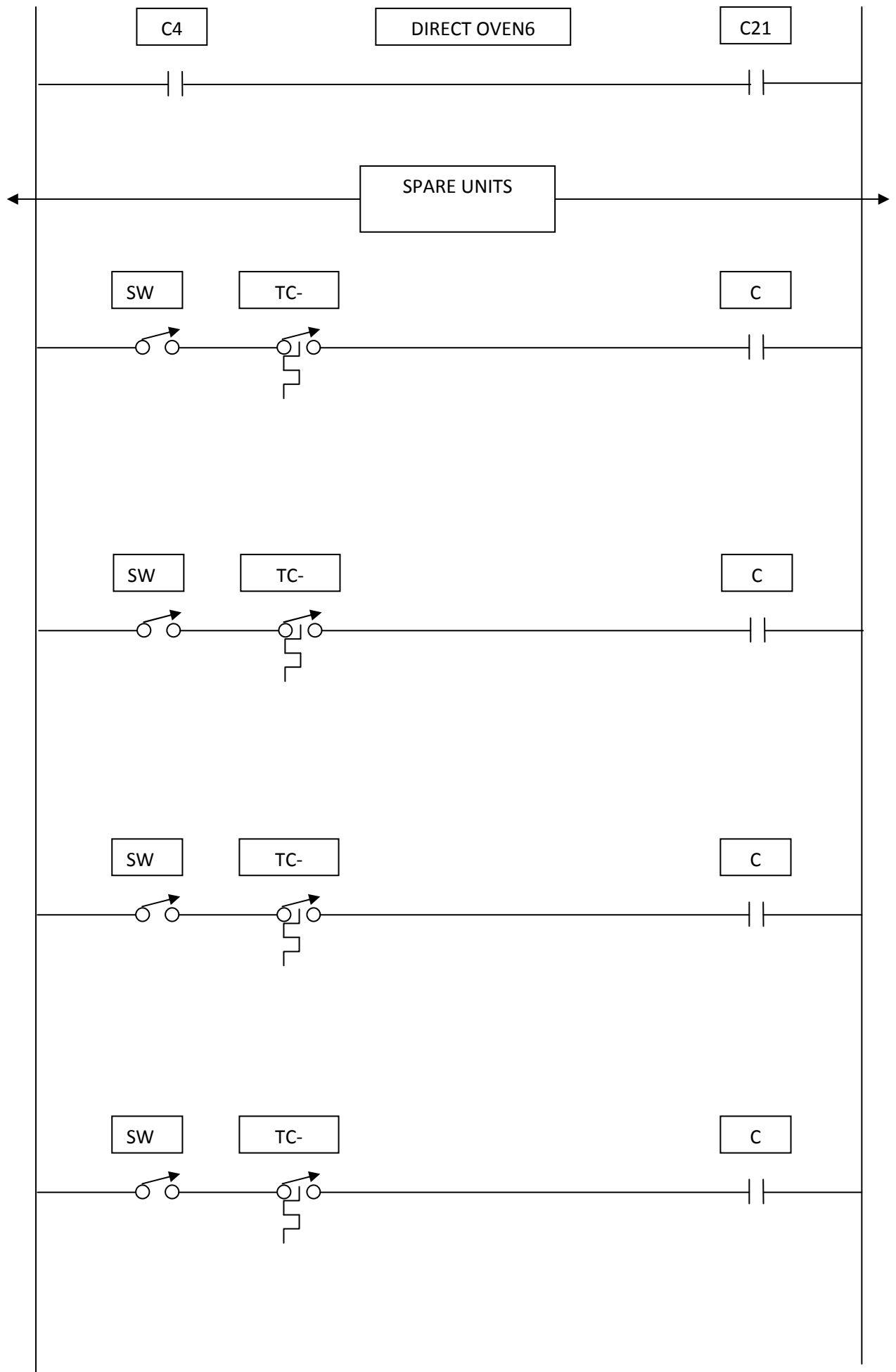






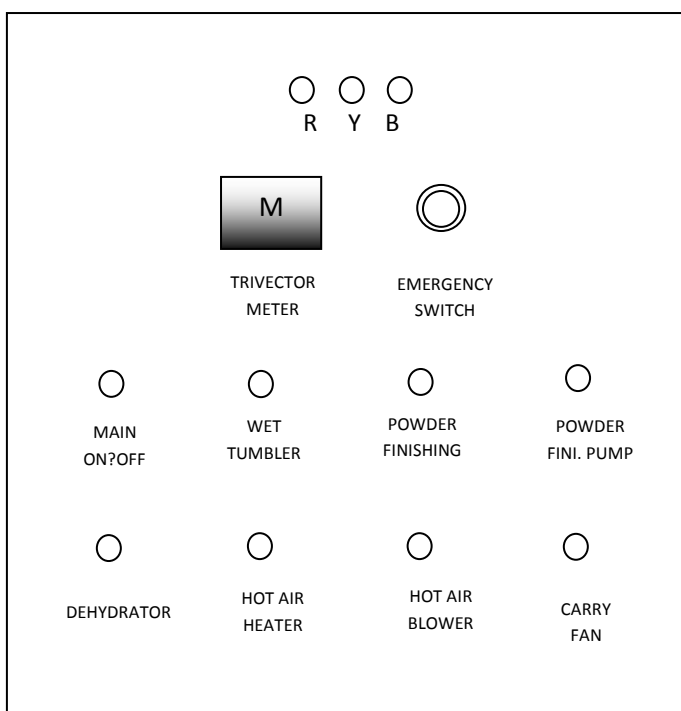






PANEL BOARD NO.2:- **POWDERING CONTROL PANEL BOARD-SLD**

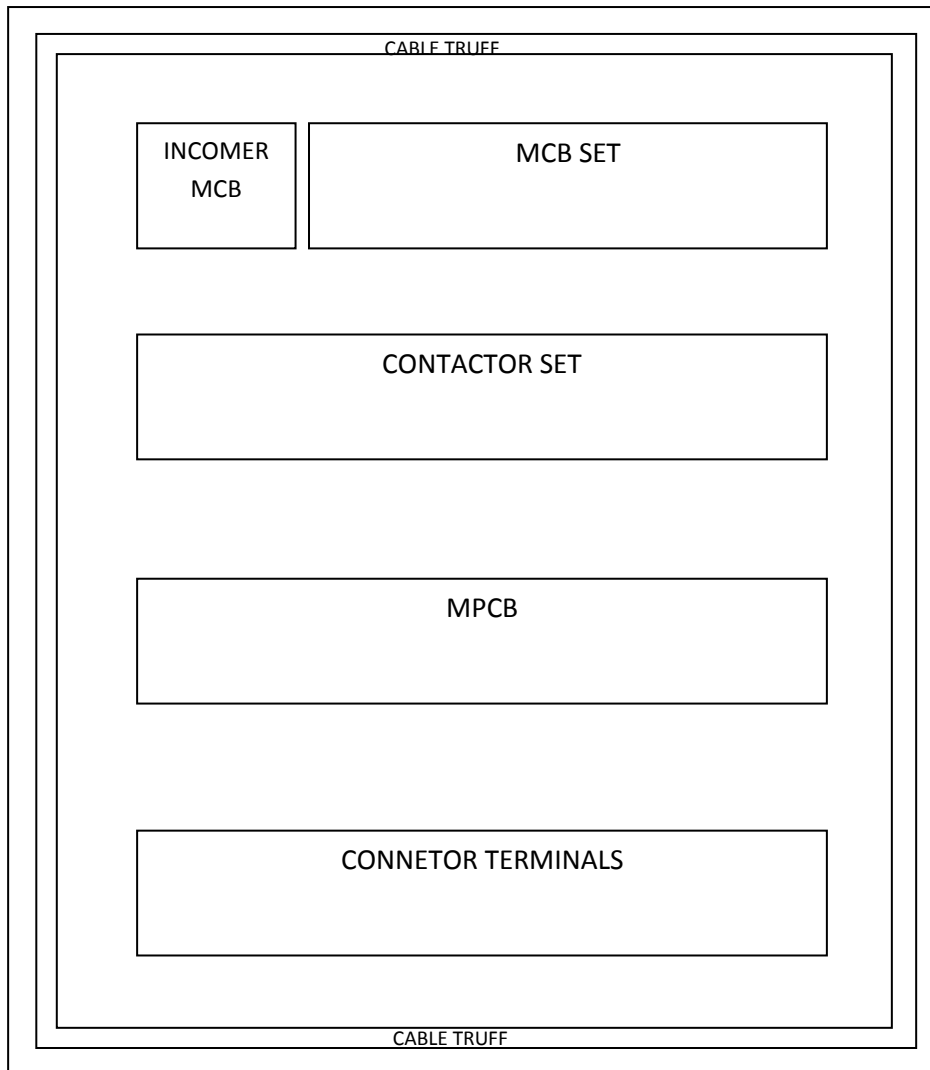
FRONT LAYOUT

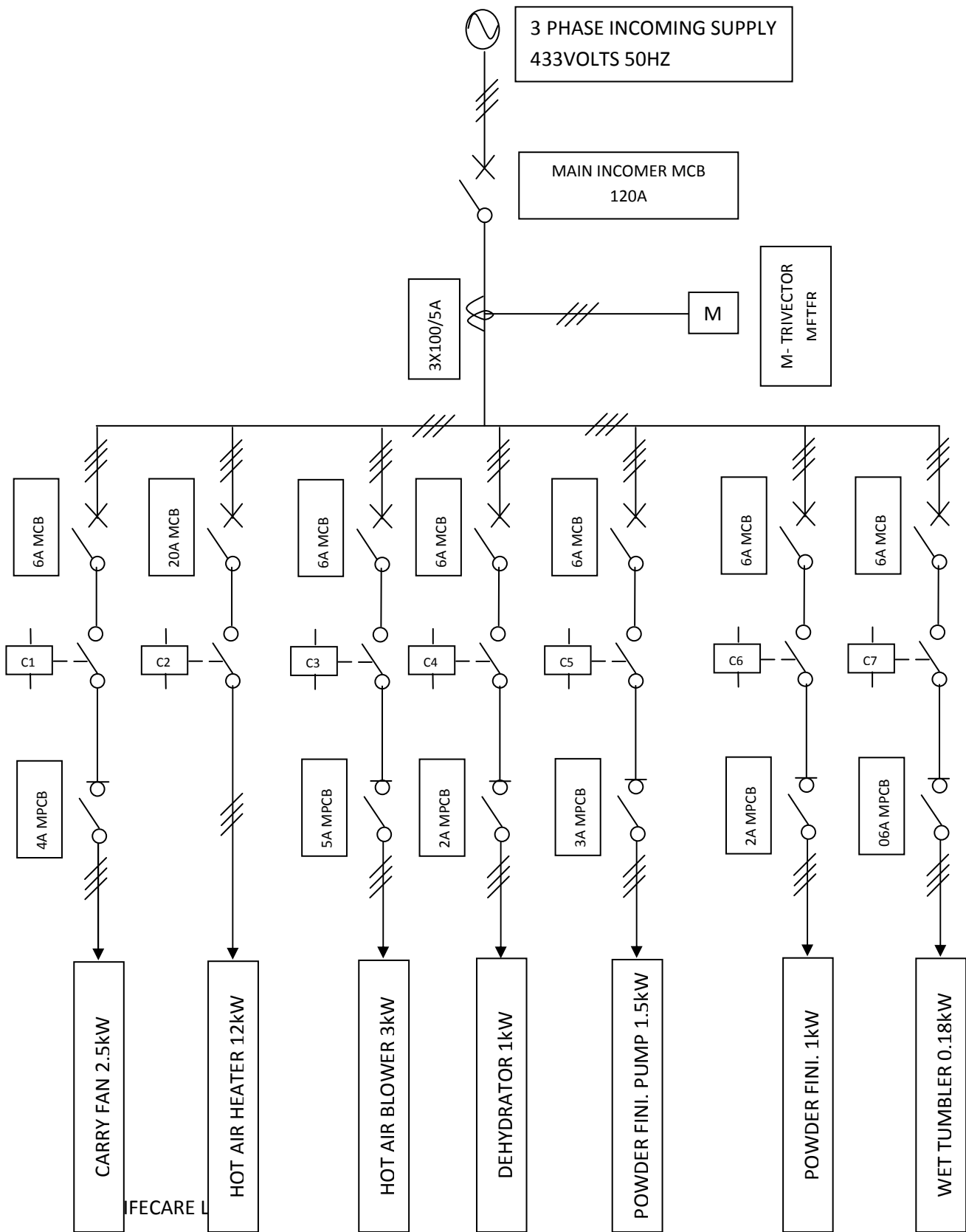


Recommended make L&T

Sl.No.	Item	Spec.	Qty.
1	Tri-vector energy meter		1
2	Indication LED lamp (R/Y/B)	230V,22.5mm OD	3
3	Emergency switch	230V,22.5mm OD	1
4	On/Off Switch	230V,22.5mm OD	8

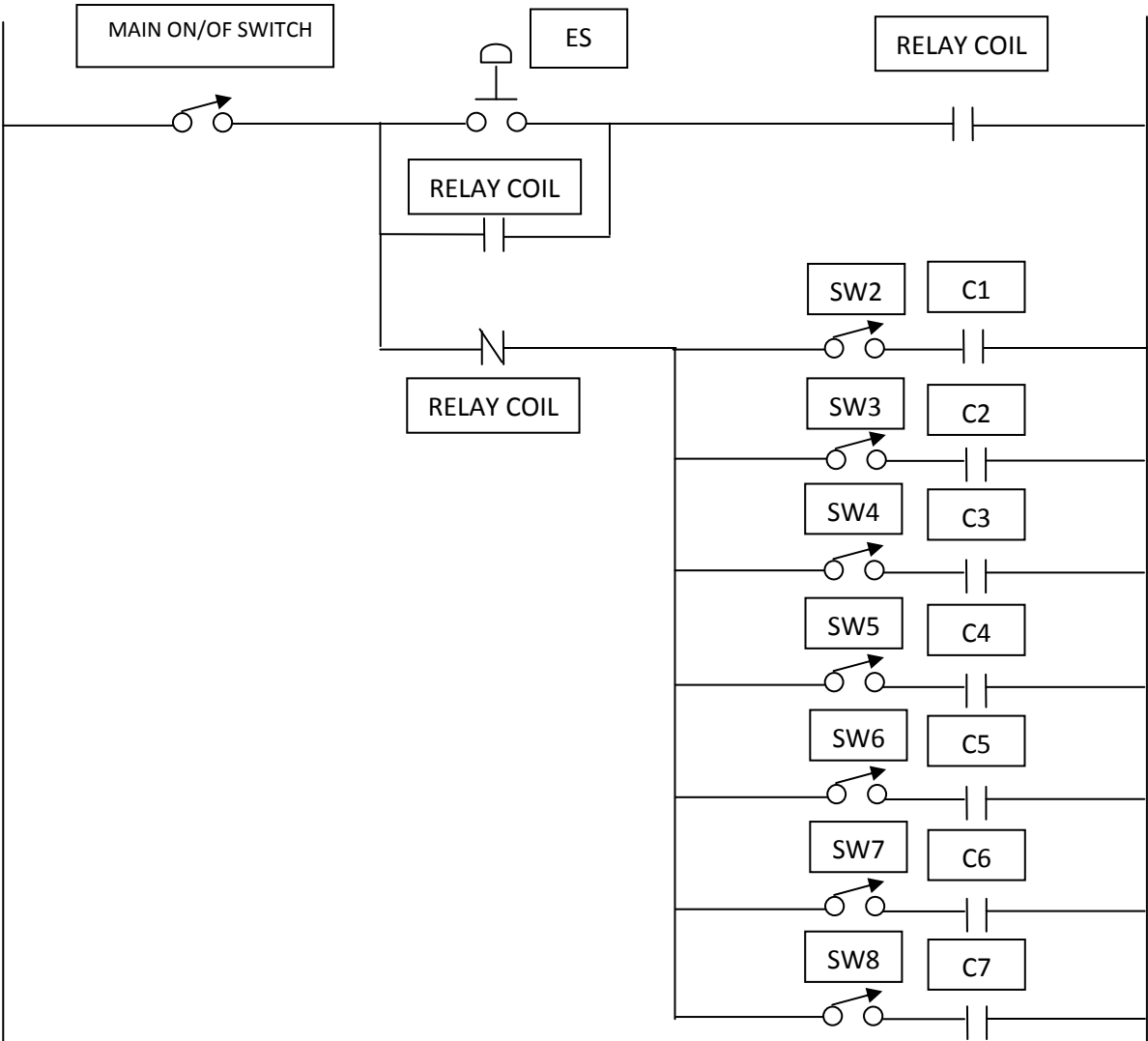
PANEL BOARD INTERNAL LAY OUT





CONTACTOR COIL WIRING-POWDER FINISHING PANEL BOARD

All contactor coils are to be wired through emergency switch.



SW1- Main ON/OFF switch

SW2- Wet Tumbler

SW3- Powder Finishing Pump

SW4-Dehydrator

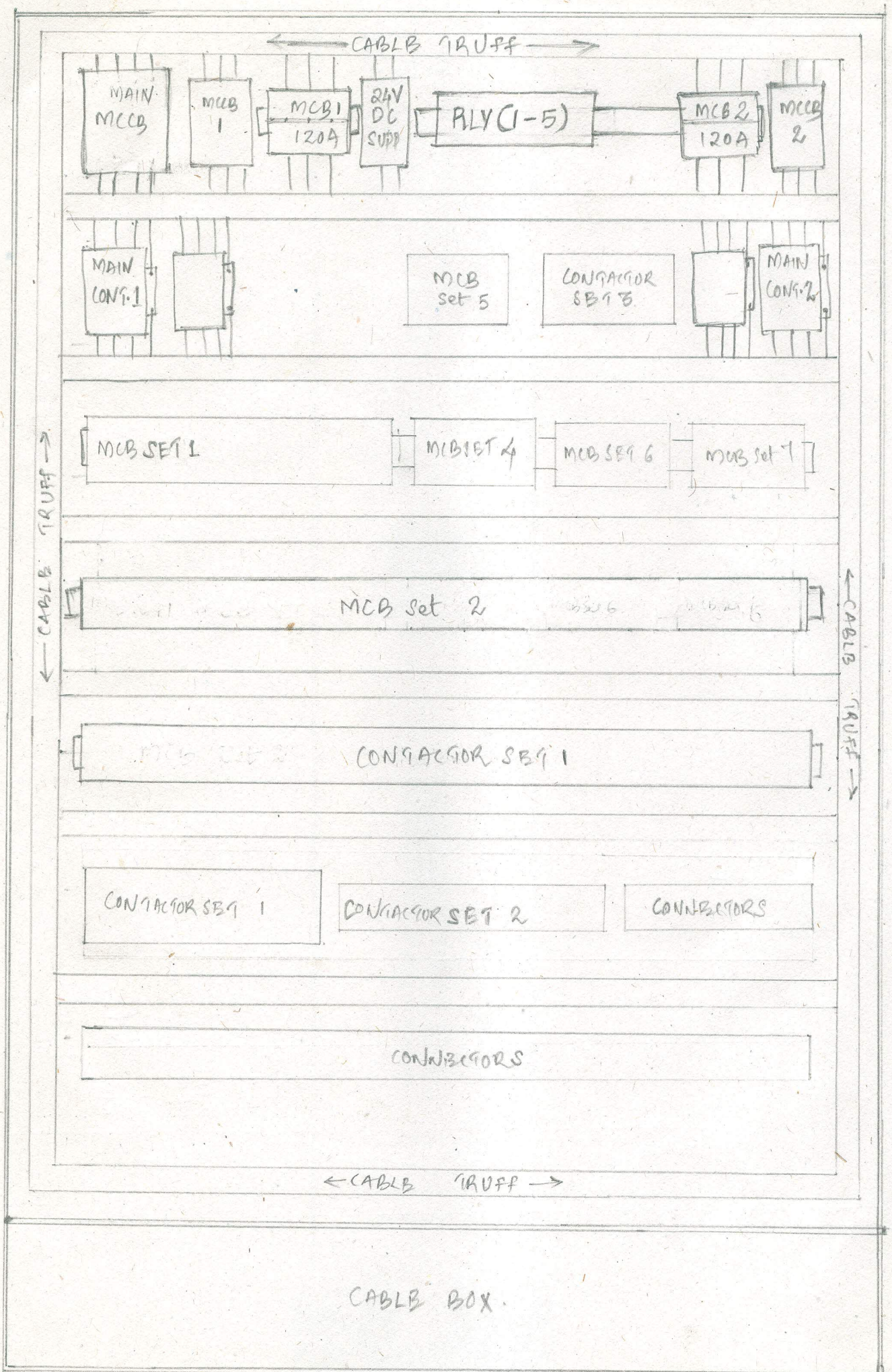
SW5-Hot air heater

SW6-Hot air blower

SW7-Carry fan

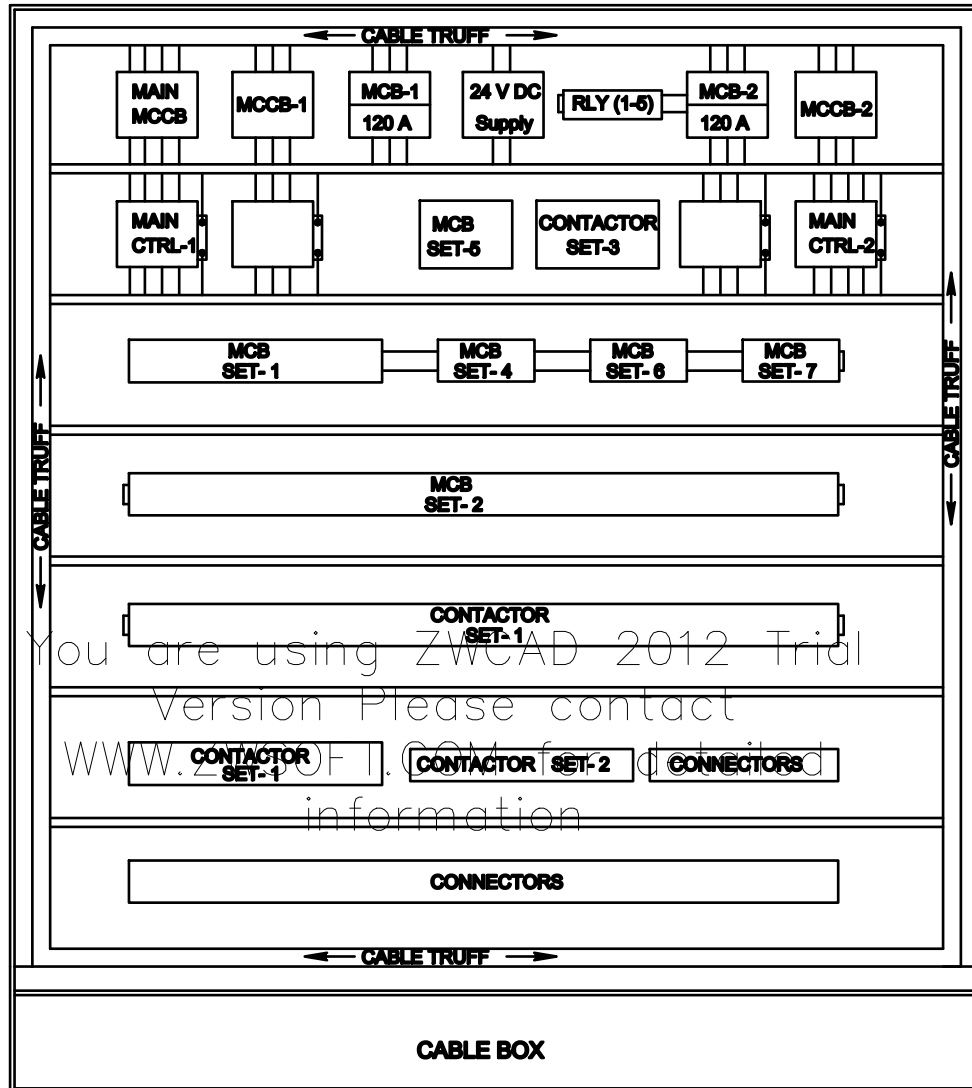
ES-Emergency switch


Relay coil with NO/NC



Item :- Main Control panel
 DEGRAD :- 02.

8/5



MATERIAL:-		HLL LIFECARE LIMITED. Thiruvananthapuram-5		NO.OFF.	
DRAWN BY:		PAUL.M.P		TITLE:- MAIN CONTROL PANEL (BTADL MACHINE)	
CHECKED BY:					
APPROVED BY:					
DATE:		07-08-2013			
SCALE:					
ALL DIMENSIONS ARE IN M.M.				Drg.no:-HLL-CED-B2-030-00	
				SHEET NO. 2 OFF. 2	
				REV:- DATE:-	

☐ M1

I 1 ☐ SW17 ☐ SW18 ☐ I 2

SW1 ☐ ☐ ☐ ☐ SW4

SW5 ☐ ☐ ☐ ☐ SW8

SW9 ☐ ☐ ☐ ☐ SW12

SW13 ☐ ☐ ☐ ☐ SW16

TC1 ☐

☐ TC 2

TC 3 ☐

☐ TC 4

TC 5 ☐

☐ TC 6

TC 7 ☐

☐ TC 8

TC 9 ☐

☐ TC 10

TC 11 ☐

☐ TC 12


TC 13 ☐

☐ TC 14

TC 15 ☐

☐ TC 16

SL: NO	ITEM	SL: NO	ITEM
1	M1 - TRI VECTOR METER	20	TC1 - Temperature Controller Mo1
2	SW1 - ON / OFF Switch for main oven 1,2,3	21	TC2 - Temperature Controller Mo 2
3	SW2 - ON/OFF Switch for Bottom oven 1	22	TC3 - Temperature Controller Mo 3
4	SW3 - ON / OFF Switch for main oven 4,5,6	23	TC4 - Temperature Controller Mo 4
5	SW4 - ON / OFF Switch for Bottom oven 2	24	TC5 - Temperature Controller Mo 5
6	SW5 - ON / OFF Switch for Intermediate 1	25	TC6 - Temperature Controller Mo 6
7	SW6 - ON / OFF Switch for Leaching Tank	26	TC7 - Temperature Controller Inter 1
8	SW7 - ON / OFF Switch for Intermediate 2	27	TC8 - Temperature Controller Inter 2
9	SW8 - ON / OFF Switch for Weash Water (hot)	28	TC9 - Temperature Controller Bo 1
10	SW9 - ON / OFF Switch for Chain Motor	29	TC10 - Temperature Controller Bo 2
11	SW10 - ON / OFF Switch for Motor 1	30	TC11 - Temperature Controller Leaching Tank
12	SW11 - ON / OFF Switch for Motor 2	31	TC12 - Temperature Controller Wash Water (Hot)
13	SW12 - ON / OFF Switch for Water Jet Pump	32	TC13 - Temperature Controller Latex Temp; 1
14	SW13 - ON / OFF Switch for LVL Controller	33	TC14 - Temperature Controller Latex Temp; 2
15	SW14 - ON / OFF Switch for Strier	34	TC15 - Temperature Controller Inter 3
16	SW15 - ON / OFF Switch for 24 VDC	35	TC16 - Temperature Controller Inter 4
17	PS 1 / SW16 - ON / OFF LVL Controller 2		
18	PS 2 / SW17 - Machine Start	36	I 1 - Start Indication (Green)
19	SW18 - Machine Stop	37	I 2 - Stop Indication (Red)

MATERIAL:-		HLL LIFECARE LIMITED.		NO.OFF.	
		Thiruvananthapuram-5			
DRAWN BY:		PAUL.M.P		TITLE:-	
CHECKED BY:				MAIN CONTROL PANEL	
APPROVED BY:				(BTADL MACHINE)	
DATE:		07-06-2013		Drg.no:-HLL-CED-B2-030-00	
SCALE:				SHEET NO. 1 OFF. 2	
ALL DIMENSIONS ARE IN M.M.				REV:- DATE:-	