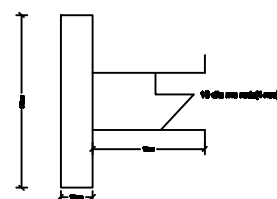


1. TUBULAR SECTION TO BE WELDED TO EMBEDDED PLATES.
2. WHEREVER TUBULAR SECTION TO REST ON MASONRY PROVIDE CC1:2:4 30X30CM BED BLOCKS WITH EMBEDDED PLATES.
3. WHEREVER TWO BUILT UP SECTIONS CROSS USE 12MM PLATES OF SUITABLE SIZE FOR CONNECTING THE TWO SECTIONS.

1. DOOR	D- FULLY GLAZED ALUMINIUM	3MX2.1M
2. DOOR	D1-FACTORY MADE LAMINATED LUMBER	1MX2.1M
3. DOOR	D2- FRP	0.8MX2.1M
4. WINDOW	W- FULLY GLAZED ALUMINIUM	1.5MX1.5M
5. VENTILATOR	V- FULLY GLAZED	0.8MX0.6M



A cross-sectional diagram of the composite beam. It shows a central rectangular core labeled "20mm gap" with diagonal hatching. This core is flanked by two solid rectangular sections. The left section is labeled "32mm MS PIPE" and the right section is labeled "8mm ms rod". The entire assembly is enclosed in a rectangular frame.

NOTE:MS pipe having wall thickness 3.25 mm (minimum) to be used

Scale: Not to scale	PROJECT:INFRASTRUCTURTE DEVELOPMENT PROJECT		
Drawn:	TITLE: VALUATION CENTRE NO.2		
Checked:			
Approved:	Date: 20-12-2012	Drg No: KUHS/IDP/SVC/02	Revision: R0